

SERVICE BULLETIN



BRIGGS & STRATTON, LLC

YOU. POWERED.

TO: NOTIFIED CUSTOMERS	CRITICAL CORRECTION - ACTION AND RESPONSE REQUIRED IMMEDIATELY	<input type="checkbox"/>
BULLETIN NUMBER: 21-0002-NL-GR	ACTION REQUIRED - FIX, NO REPORT	<input type="checkbox"/>
DATE OF NOTICE 10/16/20	IF ENCOUNTERED - CORRECT IF ISSUE IS FOUND	<input checked="" type="checkbox"/>
SUBJECT: NL-GR SERIES DIESEL UPDATES	INFORMATION ONLY	<input type="checkbox"/>
PRODUCT LINE: NL-GR SERIES	AUTHORIZED LABOR CHARGES FOR THIS BULLETIN: .5 HR / \$50 PER UNIT	
MODEL: DIESEL	PART NUMBERS REQUIRED TO CORRECT THIS BULLETIN: 1 ea 119000 1 ea 056029 (alternate kit: 1 ea 047009 and 1 ea 046039) 1 ea 057001	
SERIAL NUMBERS: 25-000001 THROUGH 25-000090		
EXPIRATION DATE: 12/16/2020		

DESCRIPTION OR SUMMARY OF PROBLEM TO BE CORRECTED:

1. Door occasionally does not latch with existing "L" latch bracket. If encountered, install "U" latch bracket.

CORRECTIONS AND INSTRUCTION:
REMOVAL AND INSTALLATION INSTRUCTIONS ATTACHED.

CONTACT INFORMATION: FOR ADDITIONAL CLARIFICATION OR FURTHER INSTRUCTIONS, PLEASE CONTACT THE FOLLOWING:
TECHNICAL SERVICES @ 1(308)995-3431

SERVICE BULLETIN



BRIGGS & STRATTON, LLC

YOU. POWERED.

Item 1: Door does not latch with existing "L" latch bracket. If encountered, install "U" latch bracket.

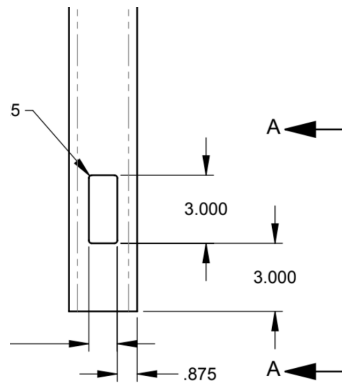
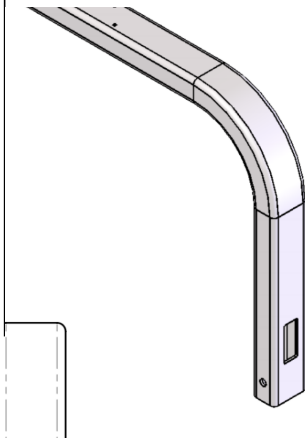
PARTS REQUIRED:

- 1 ea 119000
- 1 ea 056029 (alternate kit: 1 ea 047009 and 1 ea 046039)
- 1 ea 057001

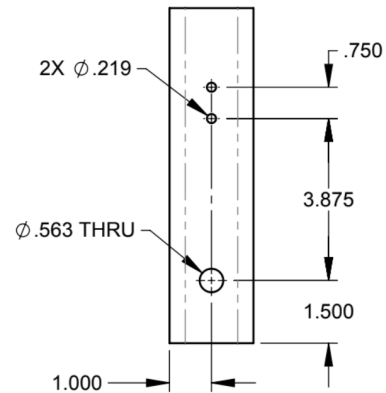
CORRECTION:

STEP 1:

USING THE APPROPRIATE DRILL BIT, LOCATE EXISTING .218" HOLES (2ea), OPEN HOLES TO .281" AND DRILL ALL THE WAY THROUGH THE LIFT BOW. REMOVE EXISTING LATCH BRACKET.



THRU



SECTION A-A

STEP 2:

USING HARDWARE, INSTALL THE U SHAPED LATCH BRACKET (119000) USING BOLT (056029) AND TIGHTEN WITH NUT (057001).

