

# SERVICE BULLETIN



BRIGGS & STRATTON, LLC

YOU. POWERED.

TO:

NOTIFIED CUSTOMERS

BULLETIN NUMBER: 21-0001-NL-GR

DATE OF NOTICE 10/15/20

SUBJECT: NL-GR SERIES DIESEL UPDATES

PRODUCT LINE: NL-GR SERIES

MODEL: DIESEL

SERIAL NUMBERS: 25-000001 THROUGH 25-000037, 25-000039  
THROUGH 25-000046, 25-000050 THROUGH  
25-000052, 25-000059, 25-000060

EXPIRATION DATE: 12/15/2020

CRITICAL CORRECTION - ACTION AND  
RESPONSE REQUIRED IMMEDIATELY

☐

ACTION REQUIRED - FIX, NO REPORT

☒

IF ENCOUNTERED - CORRECT IF  
ISSUE IS FOUND

☐

INFORMATION ONLY

☐

AUTHORIZED LABOR CHARGES FOR THIS BULLETIN:

.5 HR / \$50 PER UNIT

PART NUMBERS REQUIRED TO CORRECT THIS  
BULLETIN:

SEE BULLETIN ITEMS

## DESCRIPTION OR SUMMARY OF PROBLEM TO BE CORRECTED:

1. An additional exhaust clamp is needed between the DOC filter and the exhaust.
2. A heat shield is needed near the exhaust to protect heat sources.
3. Replace existing fuel line with 3/16" fuel line.
4. The tail light harness needs to be routed away from the heat source of the engine.

## CORRECTIONS AND INSTRUCTION:

See attached brochure for installation instructions

CONTACT INFORMATION: FOR ADDITIONAL CLARIFICATION OR FURTHER INSTRUCTIONS, PLEASE CONTACT THE FOLLOWING:  
TECHNICAL SERVICES @ 1(308)995-3431

# SERVICE BULLETIN



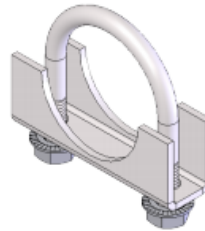
BRIGGS & STRATTON, LLC

YOU. POWERED.

**Item 1:** An additional clamp is needed between the DOC filter and the exhaust.

## PARTS REQUIRED:

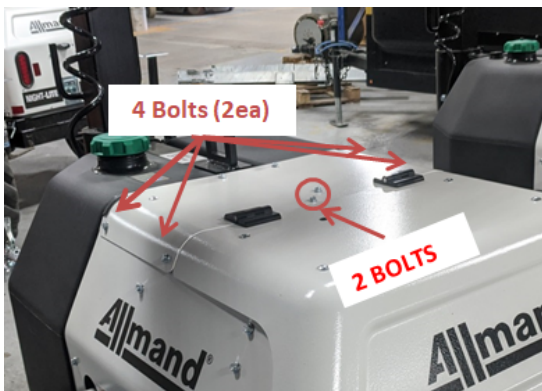
1 each of P/N 112211 Exhaust  
Clamp Kit



## CORRECTION:

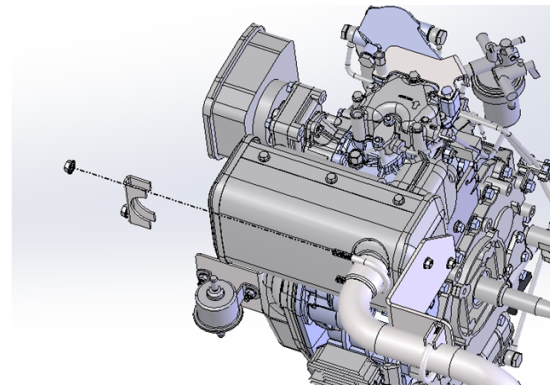
STEP 1:

REMOVE 6 BOLTS FROM TOP COVER AS  
SHOWN. RETAIN BOLTS FOR REINSTALL.  
REMOVE TOP COVER



STEP 2:

ADD EXHAUST CLAMP (112211) TO PIPE GOING  
FROM DOC TO EXHAUST. INSTALLATION  
DRAWING 117948



# SERVICE BULLETIN



BRIGGS & STRATTON, LLC

YOU. POWERED.

**Item 2:** A heat shield is needed near the exhaust to protect heat sources.

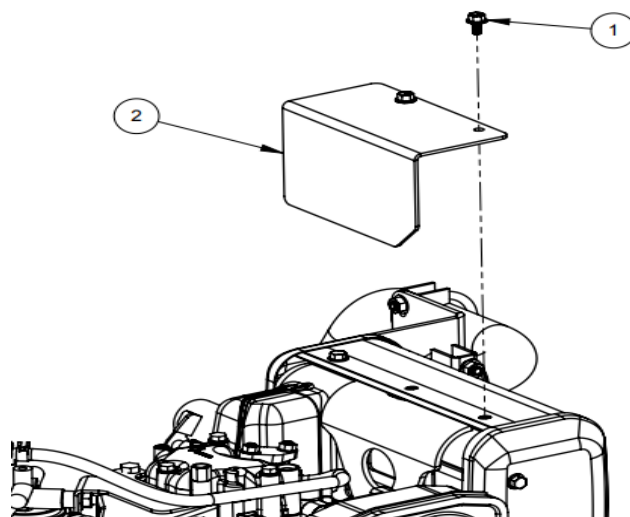
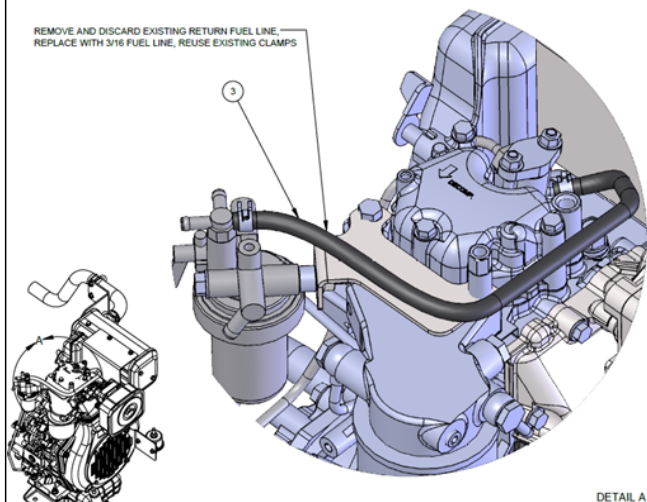
**Item 3:** Replace existing supplier provided fuel line with 3/16" fuel line.

**PARTS REQUIRED:**

1 each of **P/N 117721**, Heat Shield

2 each of **P/N 056003**, M6x1.0x12 serrated flange hex bolt.

1 each of **P/N 081001**, hose 3/16 fuel line x 14.00



**STEP 1:** REMOVE EXISTING FUEL LINE AND EXISTING BOLTS FROM COVER ON DOC.

**STEP 2:** REINSTALL NEW FUEL LINE AND HEAT SHIELD REPLACEMENT USING DRAWING 120274

**STEP 3:** REPLACE TOP COVER USING THE 6 BOLTS FROM ITEM 1 STEP 1.

# SERVICE BULLETIN



BRIGGS & STRATTON, LLC

YOU. POWERED.

**Item 4:** The tail light harness needs to be routed away from the heat source of the engine.

## PARTS REQUIRED:

1 each Cush Clamp  
3 each zipties

## CORRECTION:

### STEP 1:

OPEN REAR DOOR AND LOCATE THE TAIL LIGHT HARNESS AND WIRING. DISCONNECT THE HARNESS WIRES FROM THE ZIPTIES IN THE DOOR JOINTS ONLY. REMOVE THE CUSH CLAMP FROM THE HINGE IF PRESENT.



### STEP 2:

MEASURE APPROXIMATELY 10 1/2" OF WIRING FROM THE ROOF PANEL ZIPTIE. INSTALL THE LOWER HARNESS BEHIND THE CANISTER AND ZIP TIE THE CONNECTOR TO THE OUTSIDE HOLE OF THE DOOR HINGE. MOVE THE CUSH CLAMP TO THE BOLT LOCATION IN THE ROOF PANEL AS SHOWN. THIS SHOULD PROVIDE ENOUGH CLEARANCE FOR THE TAIL LIGHT HARNESS AND PLUGS TO REMAIN FAR AWAY FROM ANY HEAT SOURCES INSIDE THE COMPARTMENT. THE FINAL RESULT IS SHOWN BELOW.

