

**(en) Schematic Manual
MAXI-POWER™ 25**

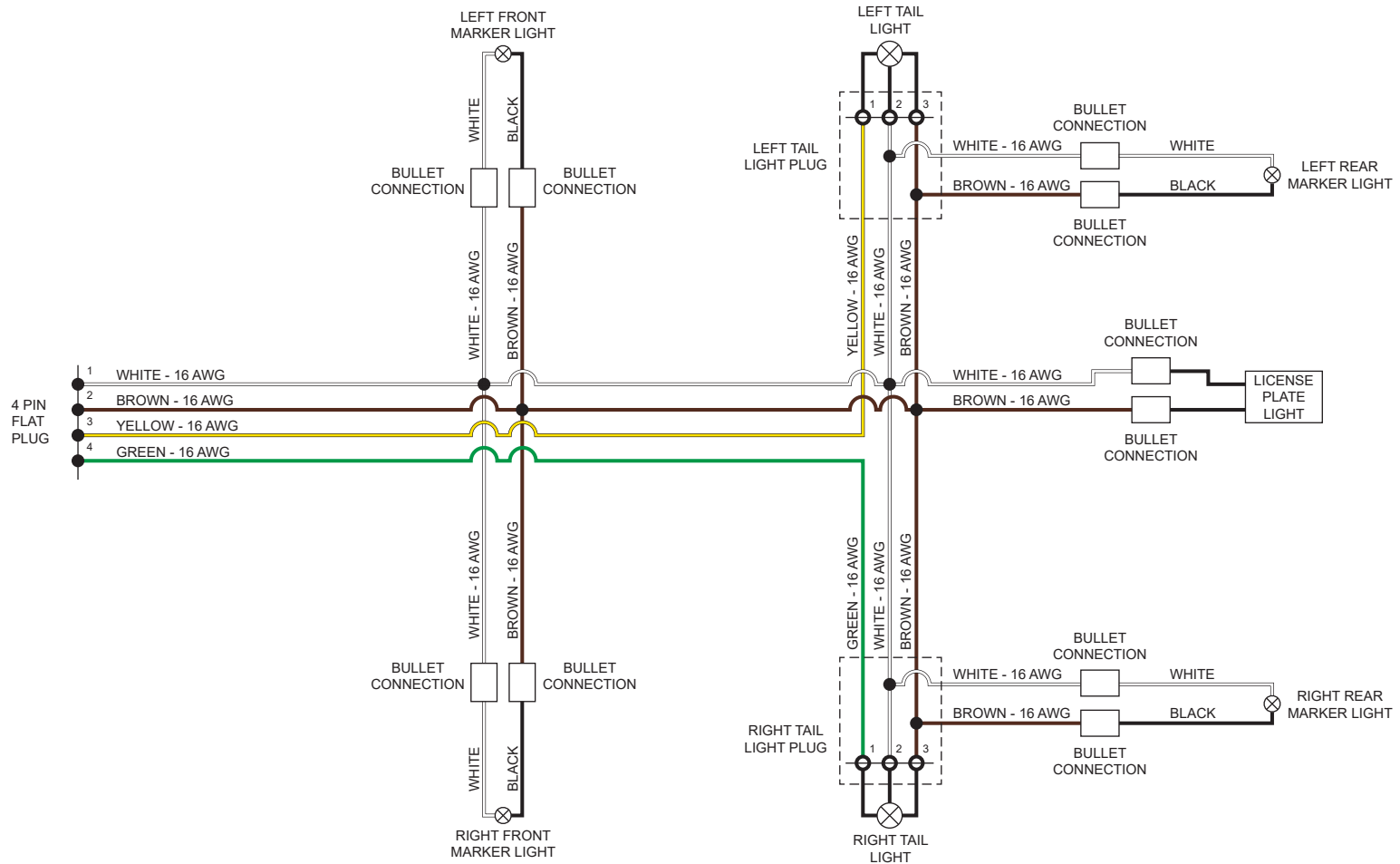
TABLE OF CONTENTS

Tail Light Harness Schematic (112266)	(1.1)
Generator to Outlets MP25 Schematic (121863)	(1.2)
Isuzu Engine Harness MP25 & MP45 Schematic (124503) Part I	(1.3)
Isuzu Engine Harness MP25 & MP45 Schematic (124503) Part II	(1.4)
Isuzu Engine Harness MP25 & MP45 Schematic (124503) Part III	(1.5)
Isuzu Engine Harness MP25 & MP45 Schematic (124503) Part IV	(1.6)
Isuzu Engine Harness MP25 & MP45 Schematic (124503) Part V	(1.7)
Deep Sea Control Harness MP25 & MP45 Schematic (124273)	(1.8)
Arctic Package Maxi-Power Schematic (124266)	(1.9)
Cam Lock 1/0 Cable Schematic (112422)	(1.10)

Maxi-Power™ 25

TABLE OF CONTENTS

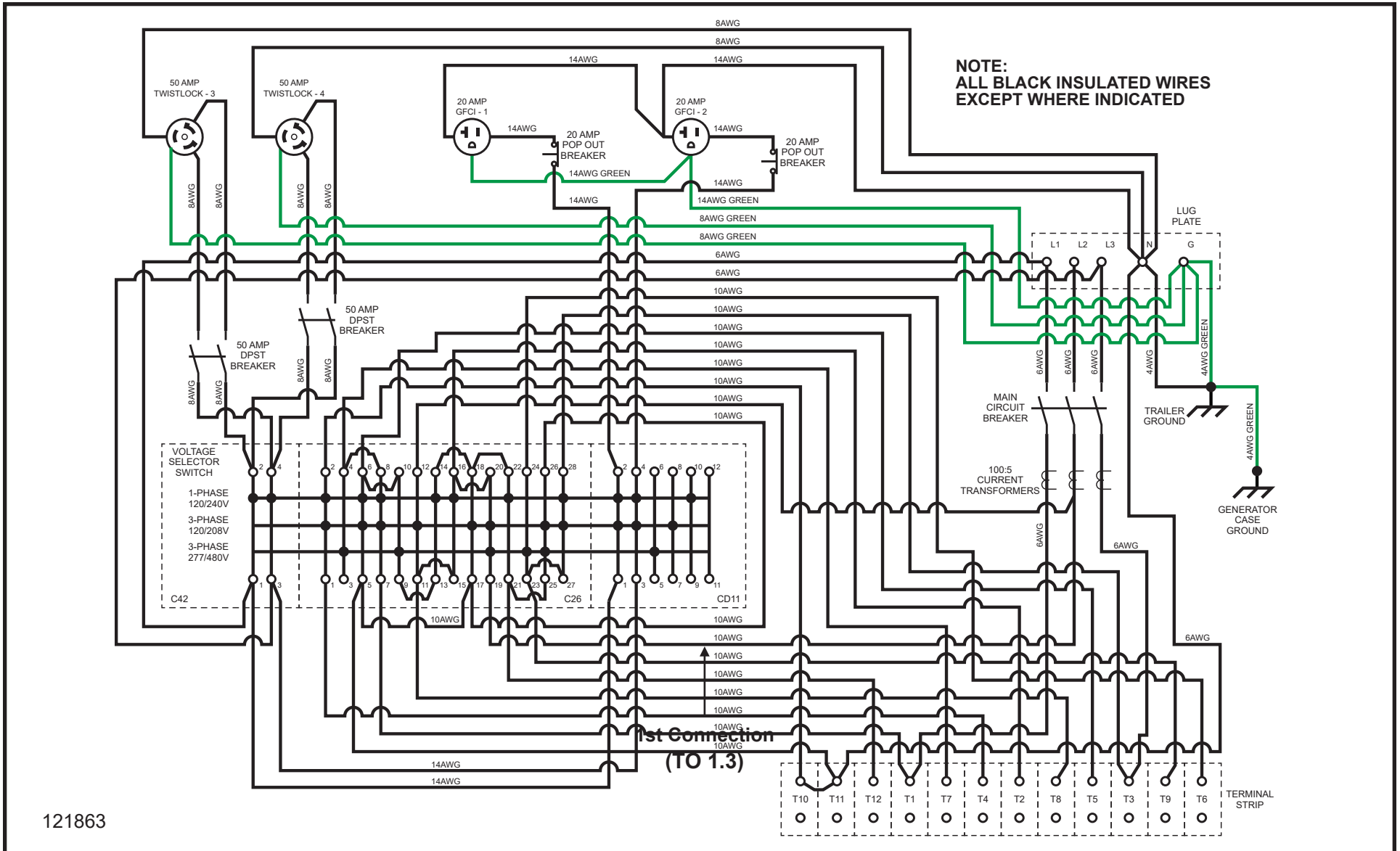
1.1 - Tail Light Harness Schematic



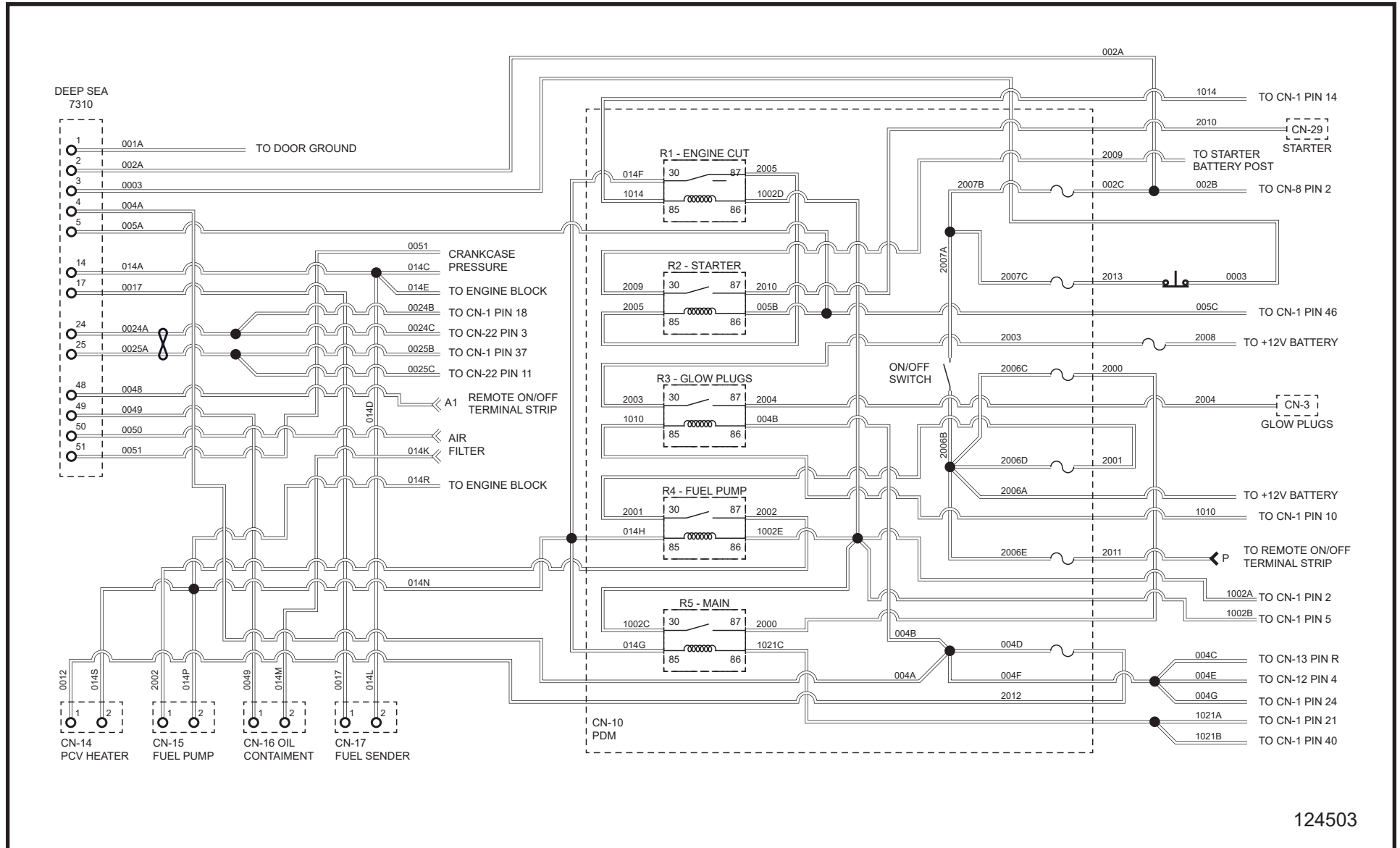
112266

Maxi-Power™ 25

1.2 - Generator to Outlets MP25 Schematic



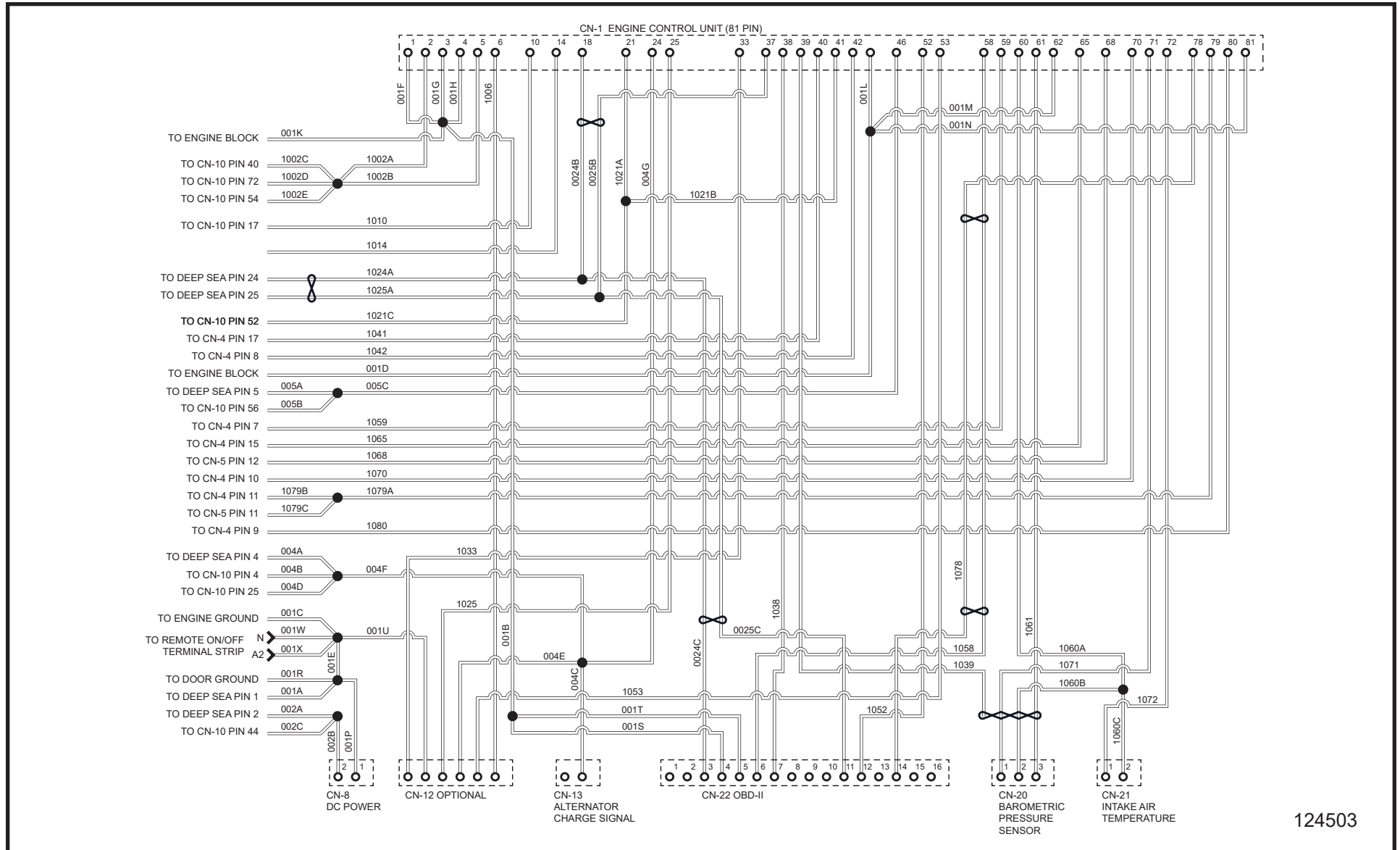
1.3 - Isuzu Engine Harness MP25 & MP45 Schematic (Part I)



124503

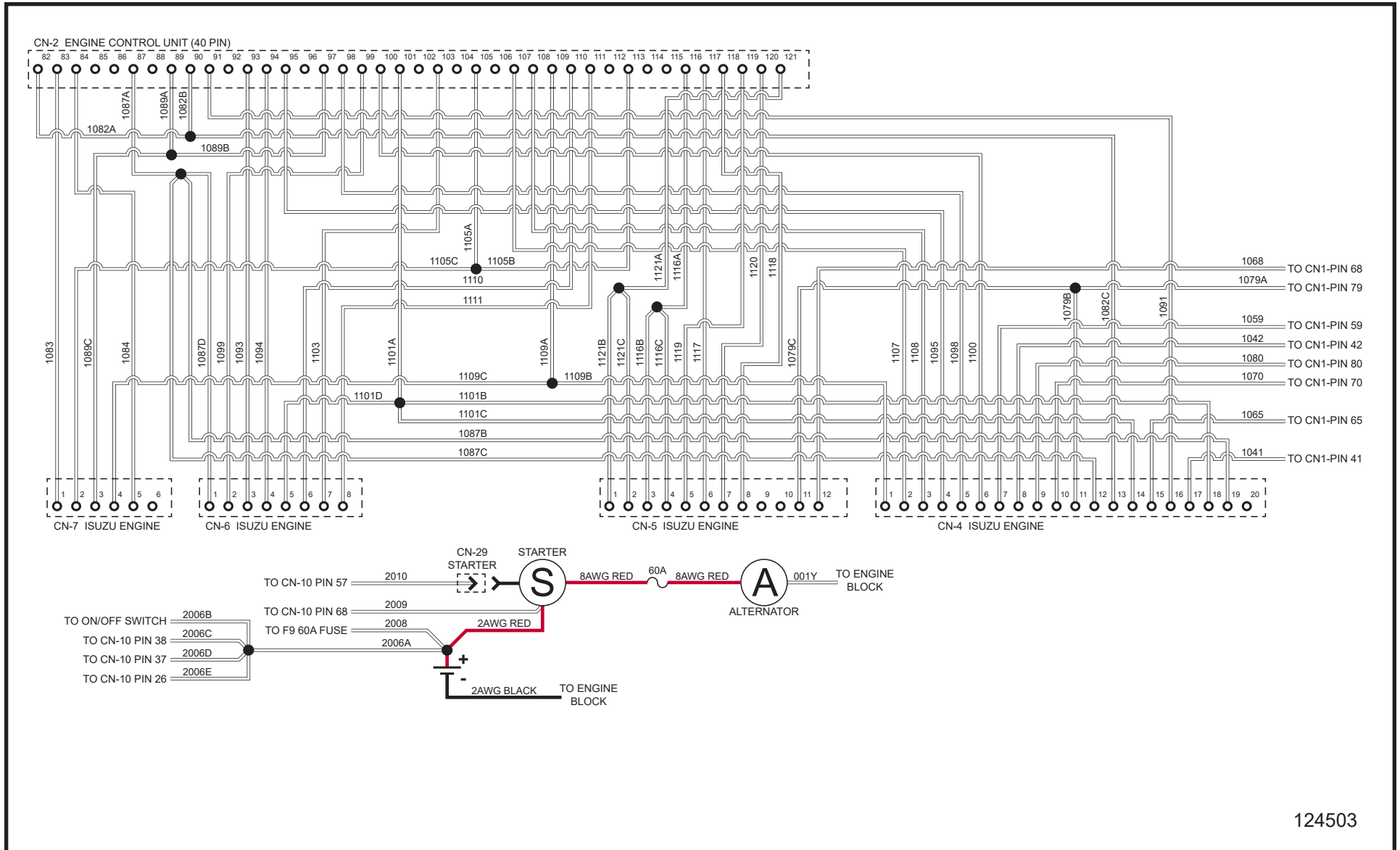
Maxi-Power™ 25

1.4 - Isuzu Engine Harness MP25 & MP45 Schematic (Part II)



124503

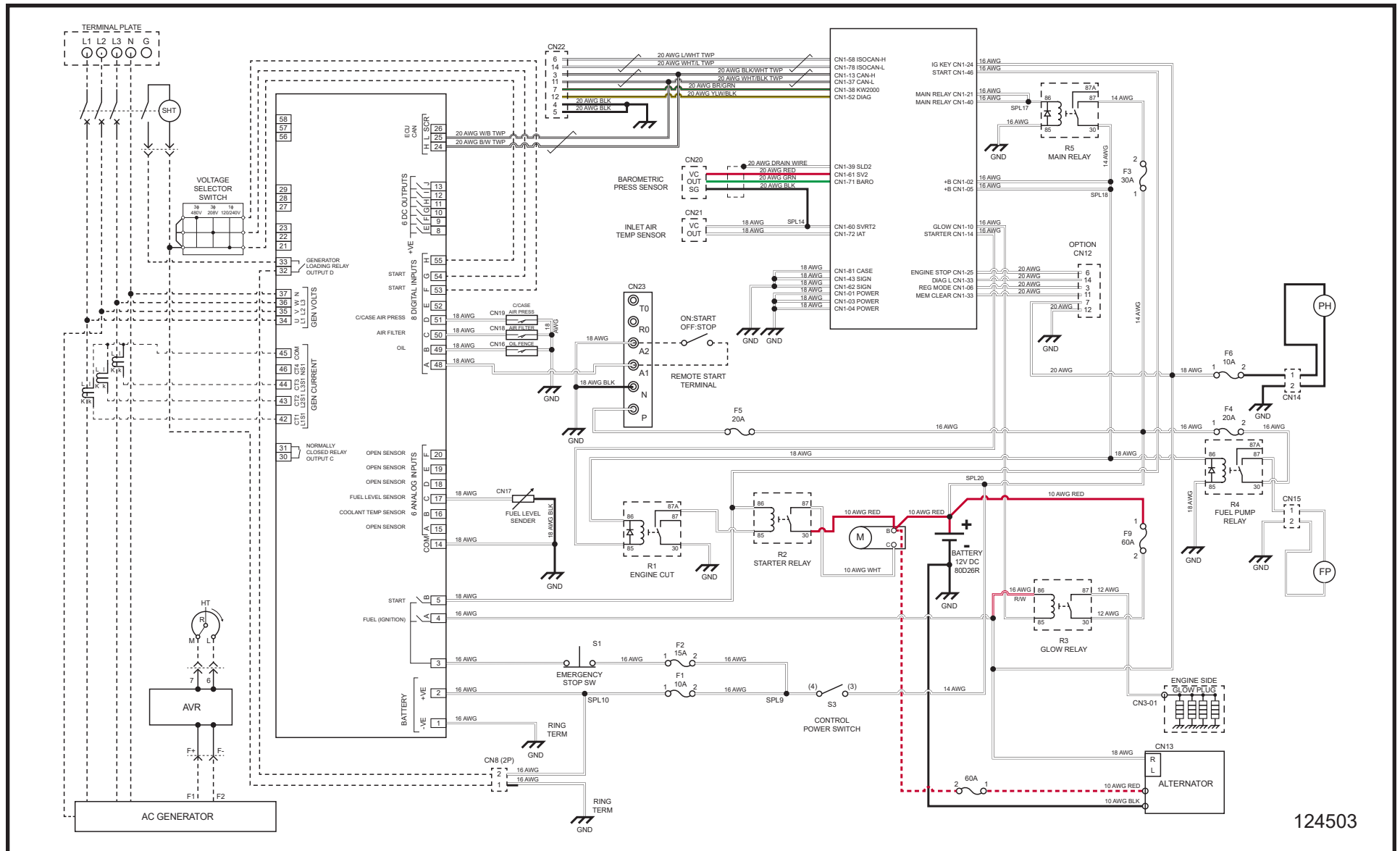
1.5 - Isuzu Engine Harness MP25 & MP45 Schematic (Part III)



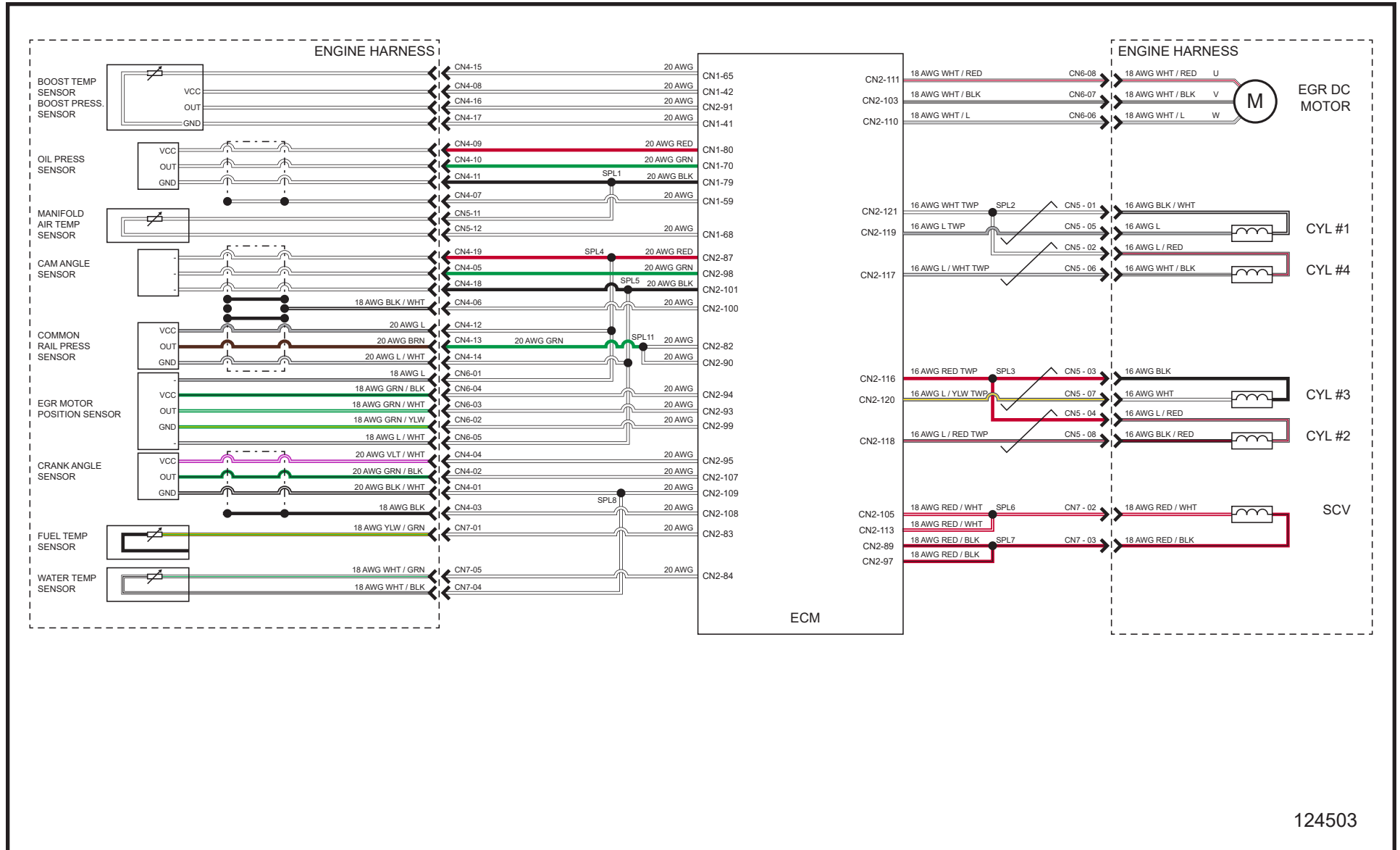
124503

Maxi-Power™ 25

1.6 - Isuzu Engine Harness MP25 & MP45 Schematic (Part IV)



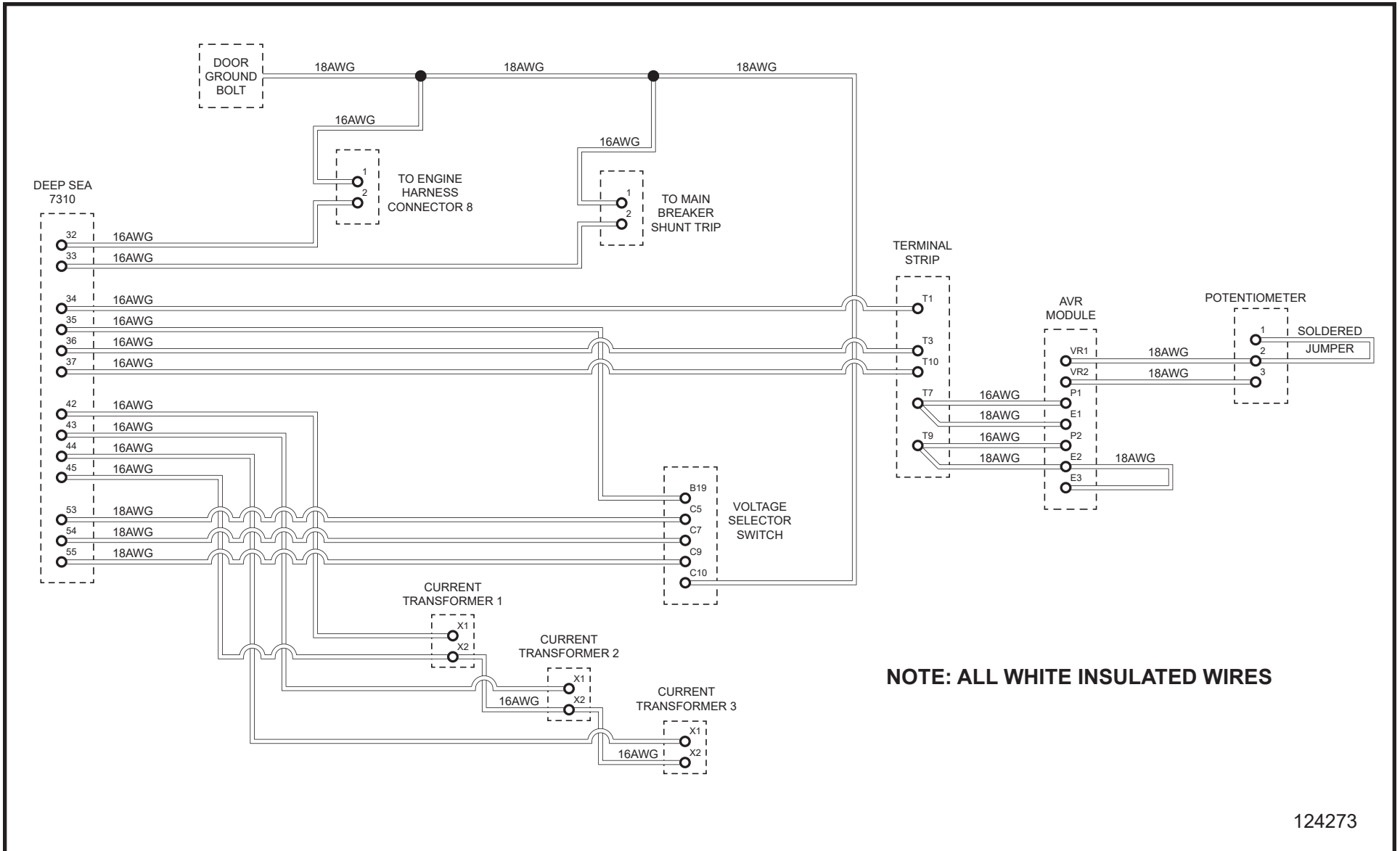
1.7 - Isuzu Engine Harness MP25 & MP45 Schematic (Part V)



124503

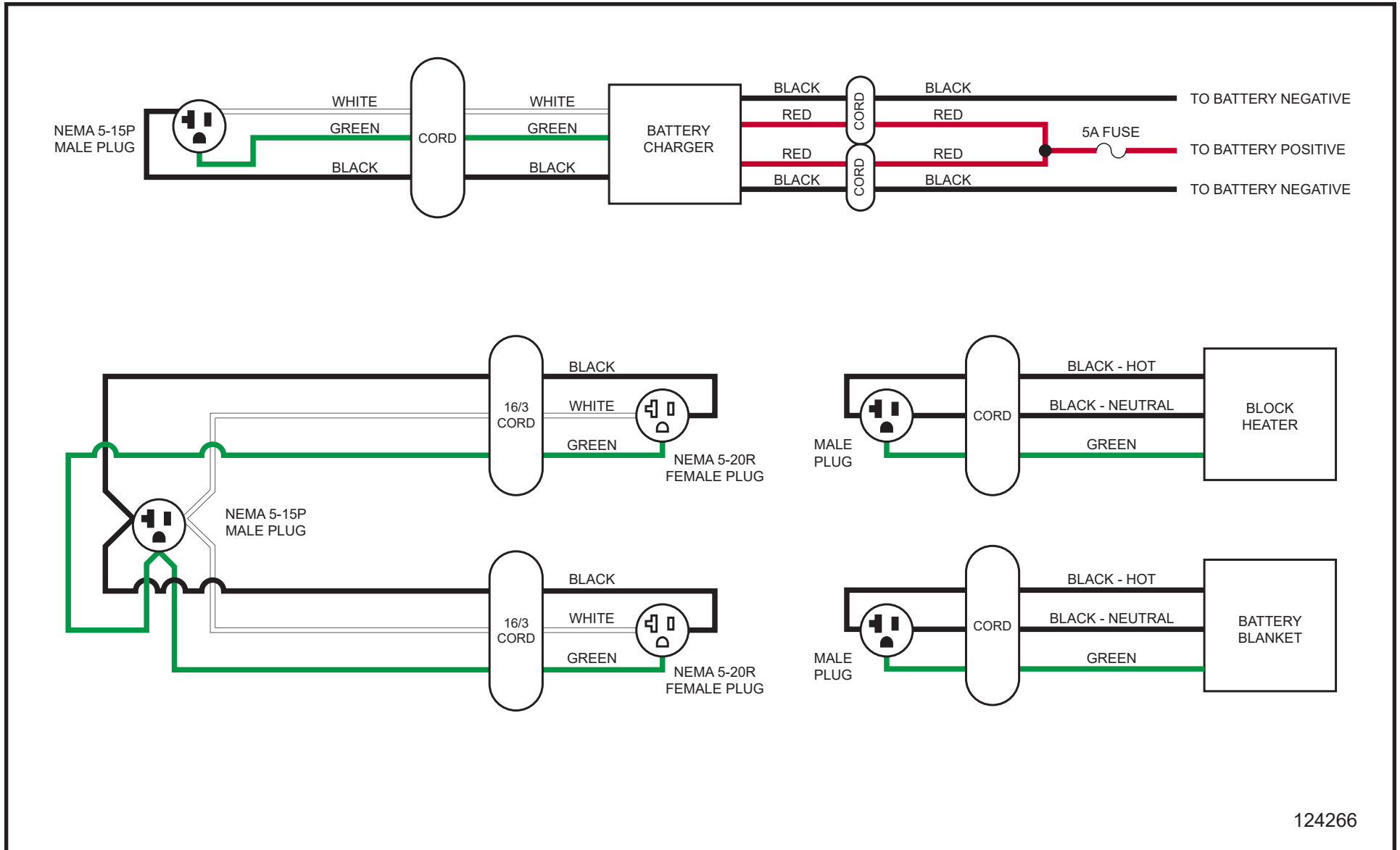
Maxi-Power™ 25

1.8 - Deep Sea Control Harness MP25 & MP45 Schematic



124273

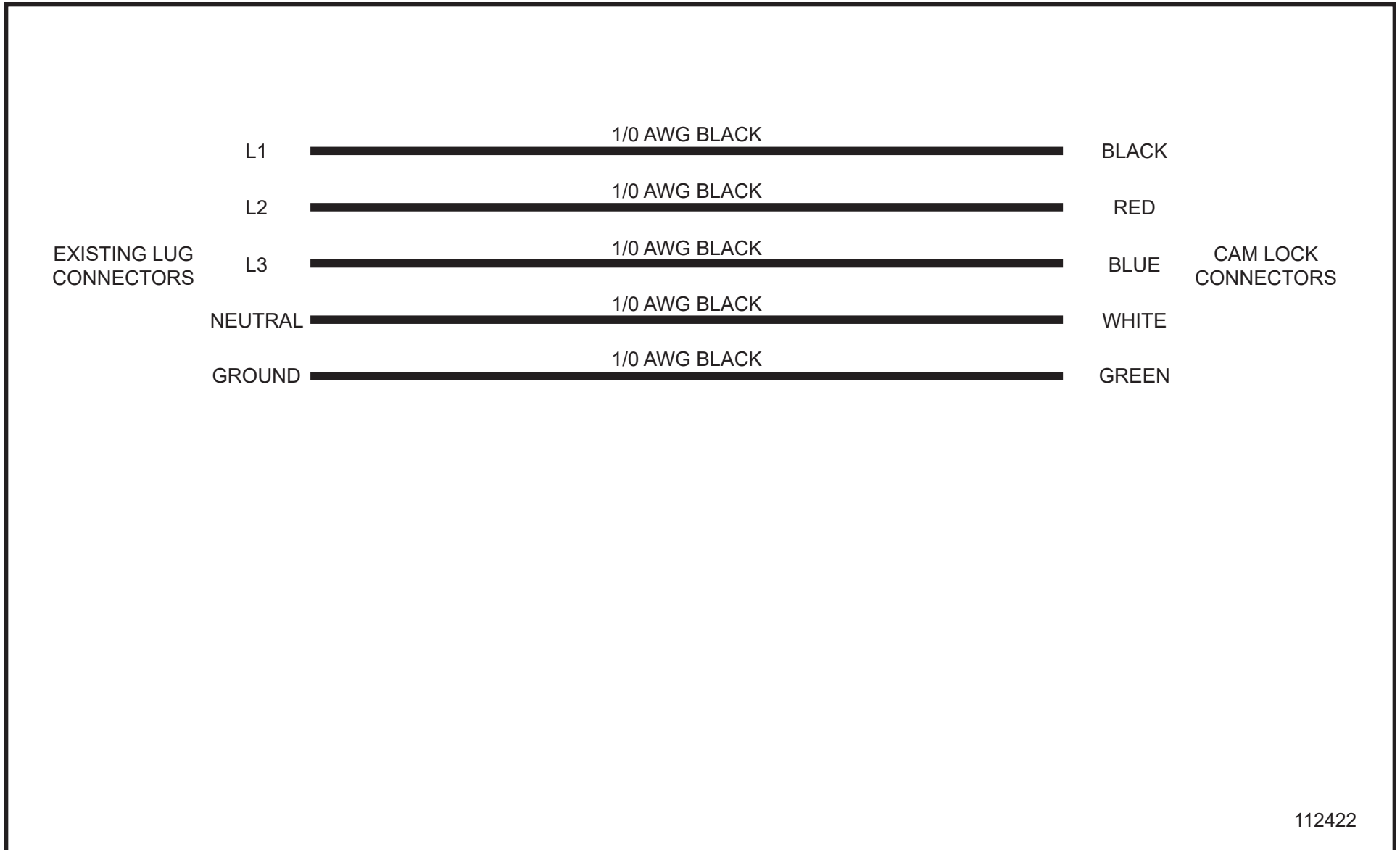
1.9 - Arctic Package Maxi-Power Schematic



124266

Maxi-Power™ 25

1.10 - Cam Lock 1/0 Cable Schematic



112422

Maxi-Power™ 25



1502 West 4th Avenue
Holdrege, NE 68949

phone: (308) 995-4495 • toll free: (800) 562-1373
fax: (308) 995-5887

www.allmand.com