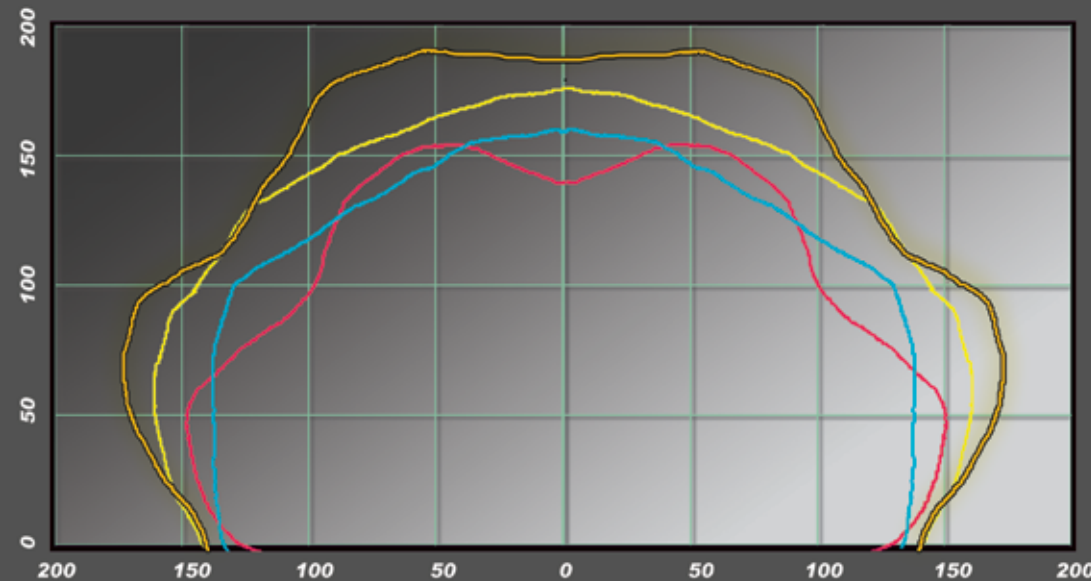


Allmand™ SHO-HD

1250 Watt Lighting System

Allmand-exclusive SHO-HD Lighting System, standard on all domestic Allmand light towers produces a brighter, whiter light than any competitive light tower. More area illuminated per tower means fewer towers are needed to do the job, resulting in reduced rental, fuel and scheduled maintenance costs. And Allmand's whiter light more closely approximates the clarity of sunlight creating a safer and more productive work site.

LIGHTING COVERAGE AREA



Allmand - 52,109 Square Feet to 0.5 Foot Candles
Magnum - 43,828 Square Feet to 0.5 Foot Candles
Terex/Amida - 36,016 Square Feet to 0.5 Foot Candles
Genie - 35,234 Square Feet to 0.5 Foot Candles

Breaking The "Five to Seven Acre" Myth

Reading the literature or visiting the websites of most light tower manufacturers, one could easily be convinced that a typical light tower with four 1000-watt metal halide lamps will illuminate five to seven acres to a level of one-half foot-candle (0.5 fc) or greater. Virtually all manufacturers make this claim, yet none offer photometric data to substantiate that kind of coverage area. As the above chart illustrates, only the Allmand SHO-HD lighting system illuminates an area substantially greater than one acre!

Photometric data provided by Independent Testing Laboratories, Boulder CO

Test data available on request from Allmand Bros. Inc.

All tradenames used are the property of their respective owners

INNOVATION AT ITS BRIGHTEST

Since introducing the first portable light tower in 1954, Allmand has been the industry's leader in lighting equipment technology.

We were the first to offer parallel lamp fixtures to deliver better light output...the first to introduce brighter SHO light fixtures...the first to develop light sequence control for hands-free operation...and the first, and only, to offer SHO-HD lighting technology, the brightest, whitest, light available with the best coverage...AND NOW THE FIRST TO OFFER VERTICAL LIGHT TOWERS IN THE NORTH AMERICAN MARKET.

But being the light leader is more than innovations - it's about offering a complete line of solutions. And with the most diverse offering of equipment and options available, we provide the right combination of features to cater to virtually any application demand or user preference.

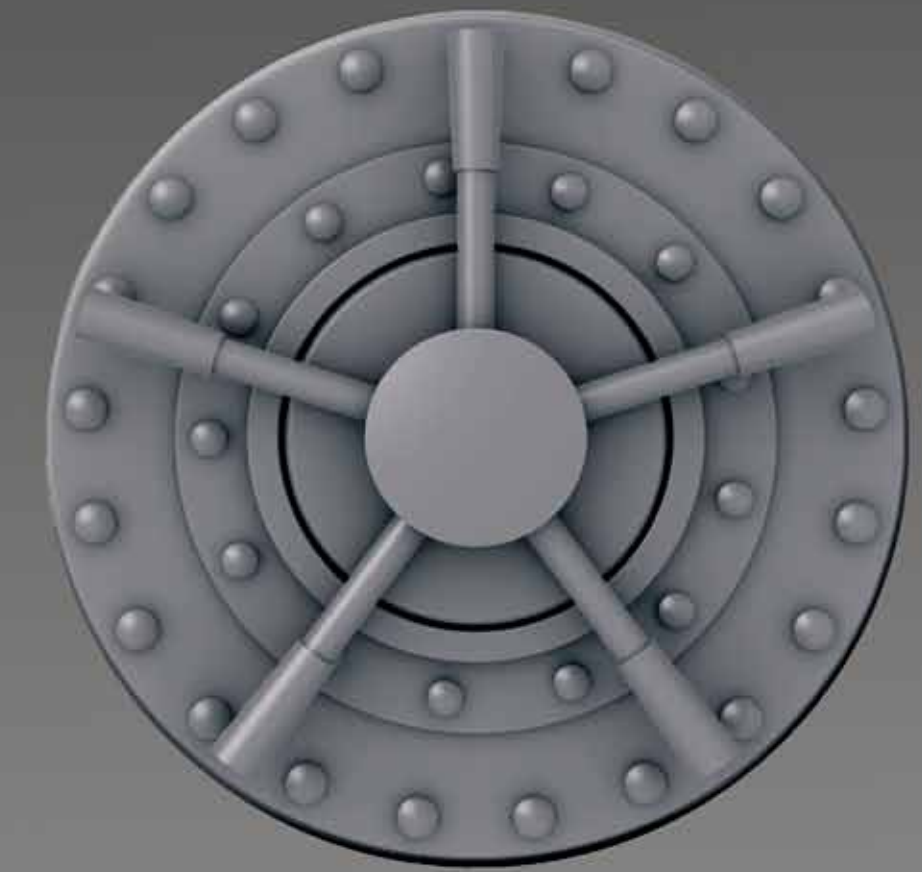
Having this right combination means you can achieve a greater return on your investment. Whether you're a rental center enjoying the benefits of increased utilization and longer service life, or an end-user expanding the workday, simplifying the job and getting more performance with fewer light towers - Allmand is sure to unlock your ROI.

Allmand™
REV A

Allmand Bros., Inc.
1502 W. Fourth Ave., Holdrege, NE 68949
800-562-1373 Toll-Free
308-995-4495 Phone 308-995-5887 FAX
www.allmand.com www.aBetterLight.com



Allmand™ LIGHT TOWER VAULT
HIGH SECURITY



LIGHT TOWER MODEL LINEUP

MAXI-LITE EX

V Series

The flagship of the Allmand light tower line-up offers three-phase power in 20kW and 30kW models, and its 135 gallon fuel tank allows over five full days of run time without refueling. With its new V-Series vertical tower that extends from towing position to full operating height in only 20 seconds, and our exclusive **SHO-HD** lighting system, the Allmand Maxi-Lite EX series sets a new standard for light towers.

Whether providing area light and power for applications as diverse as a remote oilfield office trailer or an uptown party tent, the Allmand Maxi-Lite EX series is up to the task.



**MOST POWER,
LONGEST RUN TIME**

MAXI-LITE

MORE POWER, LONGER RUNTIME

For over forty years, the Maxi-Lite name has been synonymous with robust “bullet proof” portable lighting, and the tradition continues today. With up to 20kW available power, 100 hours of continuous runtime, **SHO-HD** lighting and the choice of either our V-Series vertical tower or the conventional “lay-down” style tower, the Allmand Maxi-Lite continues to raise the light tower performance bar.

- Vertical or “lay-down” tower
- Multiple outlet configurations on 15kW and 20kW models provide maximum versatility
- Available 20 kW 3-phase power
- Available High Pressure Sodium lighting is ideal for dusty mine environments



LSC-100

LIGHT SEQUENCE CONTROLLER

Can't be there? No problem.

- Unattended photocell or timer operation
- May also be operated manually
- Starts engine, then sequences lights on
- Reverses sequence for shut-down
- Prevents generator damage due to engine starting or stopping under load
- Available on most Allmand light towers



NIGHT-LITE PRO

COMPACT LIGHT AND POWER

Since its introduction in 1996, the Allmand Night-Lite PRO and now the new Night-Lite PRO II have continued to be the innovative leaders in the compact light tower market.

Available in the new V-Series with its vertical only tower that sets up in only 20 seconds, or the more traditional “lay-down” style tower, all feature the Allmand exclusive **SHO-HD** 1250-watt lighting system.

V Series



- Vertical or “lay-down” tower
- SHO-HD lighting system illuminates more area with brighter, whiter light
- Ideal for construction sites...
- Highway repair...
- Flagger stations...
- Special events...
- And much more!



When it gets dark, think Allmand!

PORT-A-LITE

PORTABLE LIGHT STAND

When a full-size light tower is too much for the job...

- One or two 1250 Watt SHO Metal Halide lamps
- Over four times the light of 1500W quartz fixtures
- Frosted lenses reduce glare
- Up to 12' operating height illuminates the job, not the workers
- Easily disassembles without tools for storage or transport

