



**PORT-A-LITE
AUSTRALIAN STANDARD
OPERATOR'S
MANUAL**

**ALLMAND BROTHERS INC.
P.O. BOX 888
HOLDREGE, NE 68949**

**PHONE: (308) 995- 4495, 1- 800- 562- 1373
ALLMAND FAX: (308) 995- 5887
ALLMAND PARTS DEPT. FAX : (308) 995- 4883**

www.allmand.com

PART NO 103586 REVISED JANUARY 2012

PORT-A-LITE

RECORD IMPORTANT INFORMATION

Recording the equipment information will help when placing an order for replacement parts and/or decals.

COMPANY Equipment No: _____

Unit Model No: _____

Unit Vin: _____

Accessories: _____

TABLE OF CONTENTS

INTRODUCTION	4
SAFETY DEFINITIONS	5
SAFETY PRECAUTIONS	5
SAFETY LABELS	7
PREPARING THE UNIT FOR DELIVERY	7
OPERATION PROCEDURES	8-10
SCHEMATIC	11
WARRANTY	12

INTRODUCTION

ABOUT THIS MANUAL

TAKE TIME TO READ THIS MANUAL THOROUGHLY


This instruction manual provides necessary instructions for the **PORT-A-LITE** light tower.

The information found in this manual is in effect at the time of printing. Allmand Bros Inc. may change contents without notice and without incurring obligation.

If you are uncertain about any of the information in the manual, contact Allmand service department at 1-800-562-1373, for clarification.

⚠ WARNING

EXPOSURE HAZARD
Always wear personal protective equipment, including appropriate clothing, gloves, work shoes, and eye and hearing protection, as required by the task at hand.



NOTICE

Only use replacement parts specified. Other replacement parts may effect warranty coverage.



SAFETY

SAFETY DEFINITIONS

Safety statements are one of the primary ways to call your attention to potential hazards. Follow the precautions listed throughout the manual before operation, during operation and during periodic maintenance procedures for your safety, the safety of others and to protect the performance of equipment. Keep the decals from becoming dirty or torn and replace them if they are lost or damaged. Also, if a part needs to be replaced that has a decal attached to it, make sure to order the new part and decal at the same time.



This safety alert symbol appears with most safety statements. It means attention, become alert, your safety is involved! Read and abide by the message that follows the safety alert symbol.

DANGER

Indicates a hazardous situation which, if not avoided, **will** result in death or serious injury.

WARNING

Indicates a hazardous situation which, if not avoided, **could** result in death or serious injury.

CAUTION

Indicates a hazardous situation which, if not avoided, **could** result in minor or serious injury.

NOTICE

Indicates a situation which can cause damage to the equipment, personal property and/or the environment, or cause the equipment to operate improperly.

NOTE: provides key information to make procedures easier or clearer.

SAFETY PRECAUTIONS

There is no substitute for common sense and careful practices. This information contains general safety precautions and guidelines that must be followed to reduce risk to personal safety. Special safety precautions are listed in specific procedures. Read and understand all of the safety precautions before operating or performing repairs or maintenance. This safety section cannot cover every situation that may occur that is incidental to the use of the equipment.

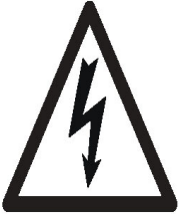
If you are uncertain about any of the information in the manual, contact Allmand service department at 1-800-562-1373, for clarification.

SAFETY

⚠ DANGER

The safety statements that follow have **DANGER** level hazards.

ELECTROCUTION HAZARD



- Do not operate the light tower if the insulation on the electrical cord or other electrical wiring is cut or worn or if bare wires are exposed. Repair or replace damaged wiring before using the unit.

⚠ WARNING

The safety statements that follow have **WARNING** level hazards.

UNSAFE OPERATION HAZARD

- Never permit anyone to install or operate the equipment without proper training.
- Read and understand this Operator's Manual, the Engine Operator's Manual before operating or servicing the light tower to ensure that safe operating practices and maintenance procedures are followed.
- Safety signs and decals are additional reminders for safe operating and maintenance techniques.

MODIFICATION HAZARD

- Never modify the equipment without written consent of the manufacturer. Any modification can effect the safe operation of the equipment.

ALCOHOL AND DRUG HAZARD



- Never operate the light tower while under the influence of alcohol or drugs, or when ill.

EXPOSURE HAZARD



- Always wear personal protective equipment, including appropriate clothing, gloves, work shoes, and eye and hearing protection, as required by the task at hand.

BURN HAZARD



- Handle hot components, such as light fixtures, with heat resistant gloves.

⚠ CAUTION

The safety messages that follow have **CAUTION** level hazards.

TOOL HAZARD

- Always use tools appropriate for the task at hand and use the correct size tool for loosening or tightening equipment parts.

NOTICE

The safety statements that follow have **NOTICE** level .

- Any part which is found defective as a result of inspection or any part whose measured value does not satisfy the standard or limit **MUST** be replaced.
- Only use replacement parts specified. Other replacement parts may effect warranty coverage.

SAFETY

SAFETY LABELS

WARNING

UNSAFE OPERATIONAL HAZARD
Always replace any safety and instruction decals that become damaged, painted or otherwise illegible.

Refer to these representations of the safety warning decals used on the **PORT-A-LIGHT** light tower to insure correct ordering if replacement becomes necessary.

DANGER

HIGH VOLTAGE

Disconnect all power before servicing.
Failure to follow all safety instructions can result in serious personal injury or death.
Install and ground per local and national codes. Consult qualified personnel with questions.

090332

PREPARING THE UNIT FOR DELIVERY OR RENTAL

The **PORT-A-LITE** light tower should be operated properly and maintained properly for maximum service life. Never deliver or put machine into service with known defects or missing instructions or decals. Always instruct the customer in proper operation and safety procedures as described in this *Operator's Manual*. Always provide the manual with the equipment for proper and safe operation.

CHECK LIST

- Visually inspect the equipment to ensure that all instructions and decals are in place and legible.
- Inspect the light tower spring latch assembly which locks the light tower in the vertical position for proper operation.
- Inspect the light assemblies for damage and test for proper operation.
- Inspect the electrical wiring for signs of damage.
- Check to make sure the *Operator's Manual* is with the equipment.
- Inspect the machine physically for damage and repair if necessary.

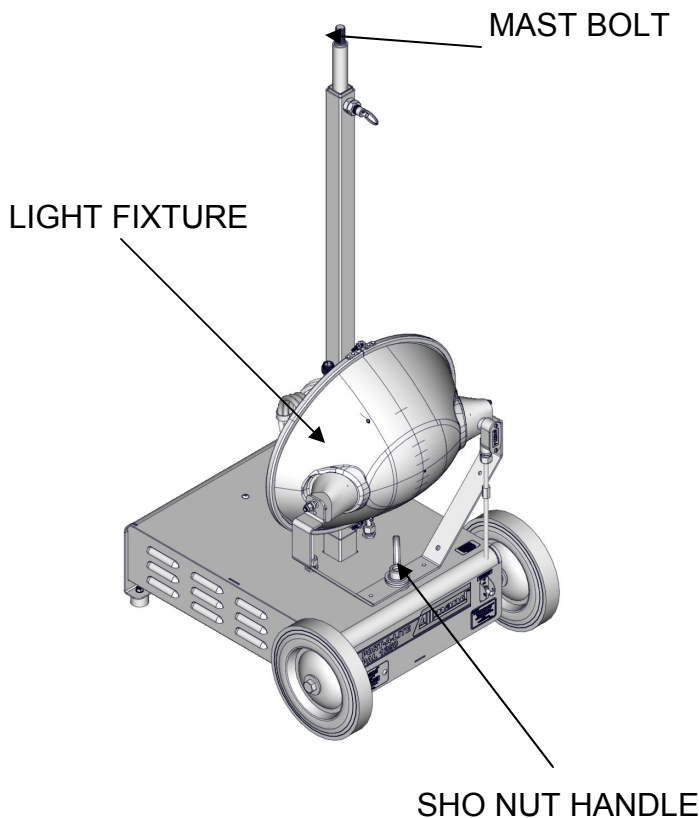
OPERATION

OPERATION PROCEDURES

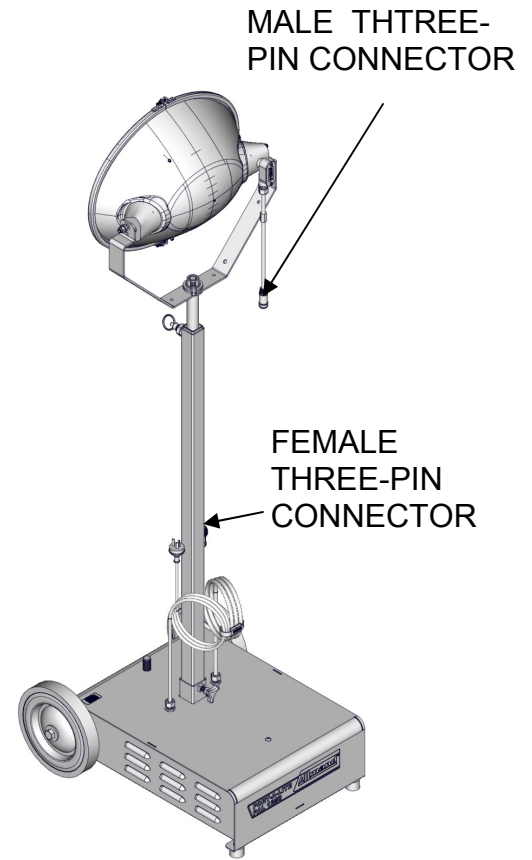
Before operating the tower light, review *Safety* on page 5-6.

To remove light fixture from storage on base and attach light fixture to mast prior to use:

1. Remove the light fixture nut handle and the three washers retaining the light fixture to the base unit and remove the light fixture from the storage bolt.



2. Place one of the plastic washers on top of the mast bolt. Then set the light fixture on top of the mast aligning the hole in the light fixture yoke with the mast bolt, place the other plastic washer, one metal washer and the nut handle, then tighten to secure the light fixture on the mast.



4. Connect the male three-pin connector on light fixture cord to the female three-pin connector on the base unit cord. Screw on the retaining collar until tight.

⚠ WARNING

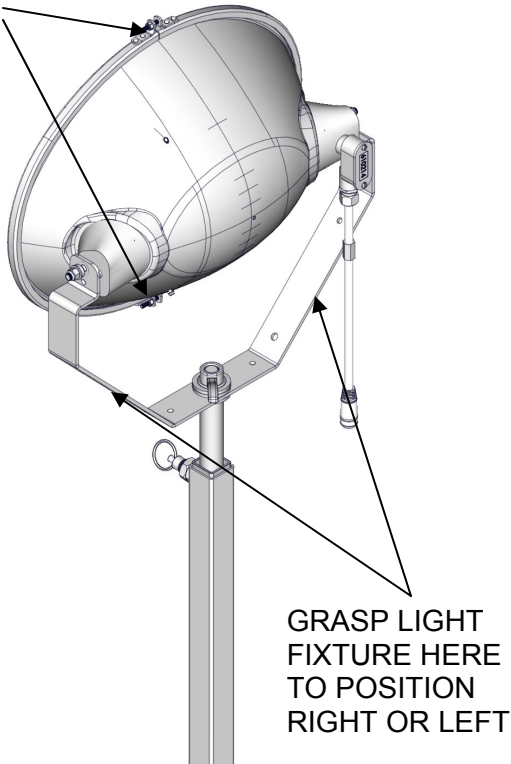
BURN HAZARD

Handle hot components, such as light fixtures, with heat resistant gloves.

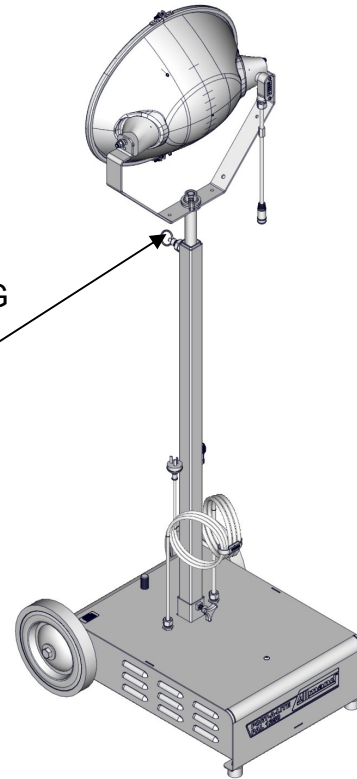
5. Move the light fixture to the desired position. By rotating the lens and reflector and/or by the light fixture mount.

OPERATION

GRASP LIGHT
FIXTURE HERE
TO POSITION UP
OR DOWN



SPRING
LATCH
PIN



WARNING

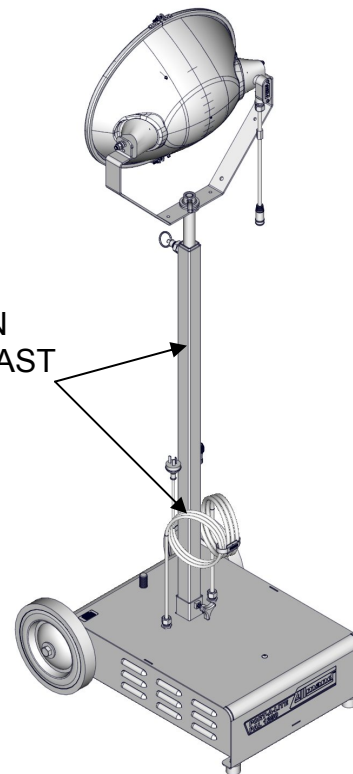
TIPPING HAZARD

Be sure to keep the base unit level before elevating tower. If the base unit is not level, the entire unit could become unstable and prone to tipping when extending the tower.

To raise tower to desired height:

1. Pull spring latch pin ring out. Raise the tower to the desired height. Retain height by allowing the spring latch pin to engage into one of the three holes in the inner mast section.

HOLES IN
INNER MAST



OPERATION

⚠ DANGER

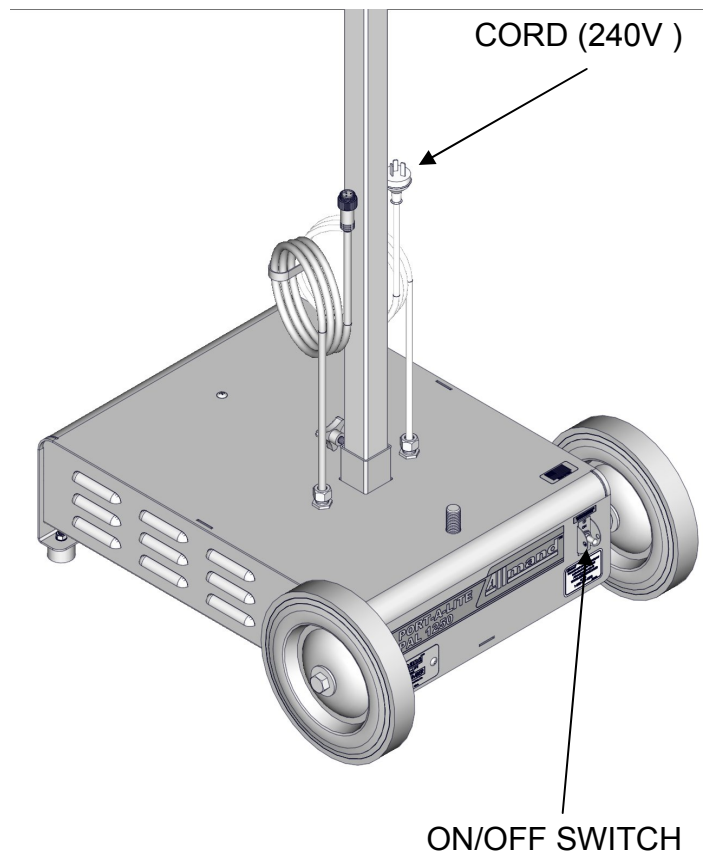
ELECTROCUTION HAZARD

Do not operate the light tower if the insulation on the electrical cord or other electrical wiring is cut or worn or if bare wires are exposed. Repair or replace damaged wiring before putting unit into service.

⚠ DANGER

ELECTROCUTION HAZARD

Positioning the unit or cord in water can cause electrocution. Always position the unit and cord on dry ground.



To operate light fixture:

1. Plug base unit cord into wall socket or generator outlet (240V, 50Hz) only.
2. Using ON/OFF switch located on the base unit move switch to ON position.
3. The light will begin to illuminate after a brief warm-up period.

To shutdown the unit:

1. Using the ON/OFF switch located on the base turn the switch to the OFF position.
2. Unplug the unit from the (204V, 50Hz) wall socket or generator outlet.

NOTICE:

- When disconnecting cords, pull on the plug and not the cord.
- The bulb and light fixture need to cool-down before it can be re-illuminated. Allow 10-15 minutes after shut-down before turning the light fixture on again.

WARRANTY

ALLMAND LIGHTING SYSTEMS LIMITED WARRANTY UNITED STATES and U.S. TERRITORIES

THIS WARRANTY IS IN LIEU OF ALL OTHER WARRANTIES EXPRESSED OR IMPLIED INCLUDING WARRANTIES OF MERCHANTABILITY OR OF FITNESS FOR PURPOSE AND ANY EXCEPTIONS ARE DESCRIBED IN THE PUBLISHED LIMITED WARRANTY ADDENDUM, AVAILABLE UPON REQUEST.

COMPONENTS, SUB-ASSEMBLIES, AND DEVICES MANUFACTURED BY OTHER MANUFACTURERS ARE NOT COVERED BY THIS WARRANTY. ALL WARRANTY INFORMATION FROM SUCH OTHER MANUFACTURERS IS PROVIDED WITHIN OR ACCOMPANIES THESE GOODS.

Subject to the foregoing, the manufacturer, Allmand Bros. Inc., hereby warrants all light towers manufactured by Allmand Bros. Inc. after April 1, 2008 to be free from defects in material and workmanship for a period of (2) years after delivery to the original purchaser. The first year warranty would include parts and labor. The second year warranty would be limited to parts manufactured by Allmand Bros. Inc. and components warranted by the original equipment manufacturer for more than 12 months. Additionally, Allmand Bros. Inc. hereby warrants all replacement parts supplied by Allmand Bros. Inc. to be free from defects in material and workmanship for a period of 90 days after date of invoice. Delivery shall be deemed for the purposes of this warranty to have occurred no later than five days following the date of sale agreement or invoice unless the purchase agreement or invoice specifically states a later delivery date in which case such delivery date shall control. The original purchaser shall be deemed to be a person who places the goods or products in actual use, and any person holding such goods solely for wholesale or retail sale purposes shall not constitute an original purchaser. PROVIDED, any leasing of these goods or other use beyond normal demonstration of same shall be deemed to be in use by an original purchaser and all warranty periods shall commence at the time of such use. During the warranty period any defective goods or parts hereof shall be repaired or replaced at manufacturer's discretion. In the event it is necessary to return such goods or parts to the factory, all transportation charges shall be prepaid. The manufacturer shall in no event pay mileage expenses, but will warrant outbound ground freight. The manufacturer shall in no event be responsible for down time and or lost revenue.

The obligations of the manufacturer is solely to repair or replace defective goods or parts or to refund the cost of the same if it is determined by the manufacturer that repair or replacement will not return the goods to proper working order or utility. **THE REMEDIES SET FORTH HEREIN ARE EXCLUSIVE AND MANUFACTURER SHALL NOT BE LIABLE FOR SPECIAL, INDIRECT, OR CONSEQUENTIAL DAMAGES. THE OBLIGATIONS OF THE MANUFACTURER HEREUNDER SHALL IN NO WAY EXCEED THE PRICE OF THE EQUIPMENT OR PART UPON WHICH SUCH LIABILITY IS BASED.**

The warranty shall not extend to tires, lamps, batteries, or parts that have been altered, changed, damaged, or improperly installed, repaired, operated or maintained. Provided, this exclusion shall not apply to installations, repairs or other work done at the manufacturer's plant or under direct manufacturer's supervision. The Operator's Manual, to the extent covered therein, is deemed to set forth the proper procedures for operation, repair, installation, and maintenance of these goods.

No representative, dealer or distributor of the company is authorized to make any changes or exceptions to this warranty unless expressly authorized in writing from the manufacturer. All warranty claims must be filed within thirty (30) days of the failure.

ALLMAND LIMITED WARRANTY 1YR LIGHTING SYSTEMS 5/08



PORT-A-LITE

AUSTRALIAN STANDARD PARTS MANUAL

**ALLMAND BROTHERS INC.
P.O. BOX 888
HOLDREGE, NE 68949**

**PHONE: (308) 995- 4495, 1- 800- 562- 1373
ALLMAND FAX: (308) 995- 5887
ALLMAND PARTS DEPT. FAX : (308) 995- 4883**

www.allmand.com

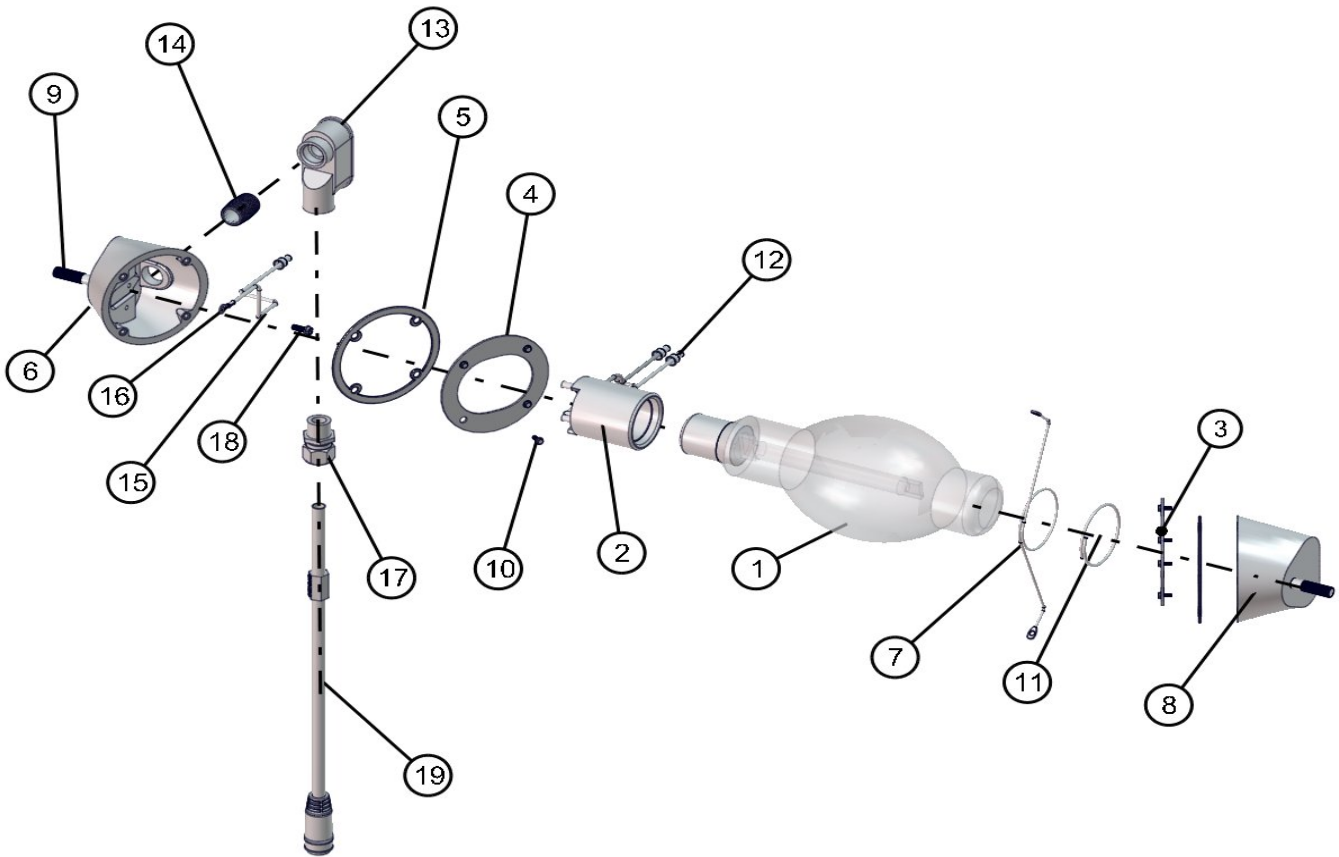
PART NO. 103586 REVISED JANUARY 2012

PORT-A-LITE

TABLE OF CONTENTS

SHO 1000W LAMP	3
SHO LAMP HOLDER	4
MAST SECTIONS	5
BALLAST AND CAPACITOR	6
BASE	7
DECALS	8

PORT-A-LITE



530555 – 1000W LAMP ASSEMBLY

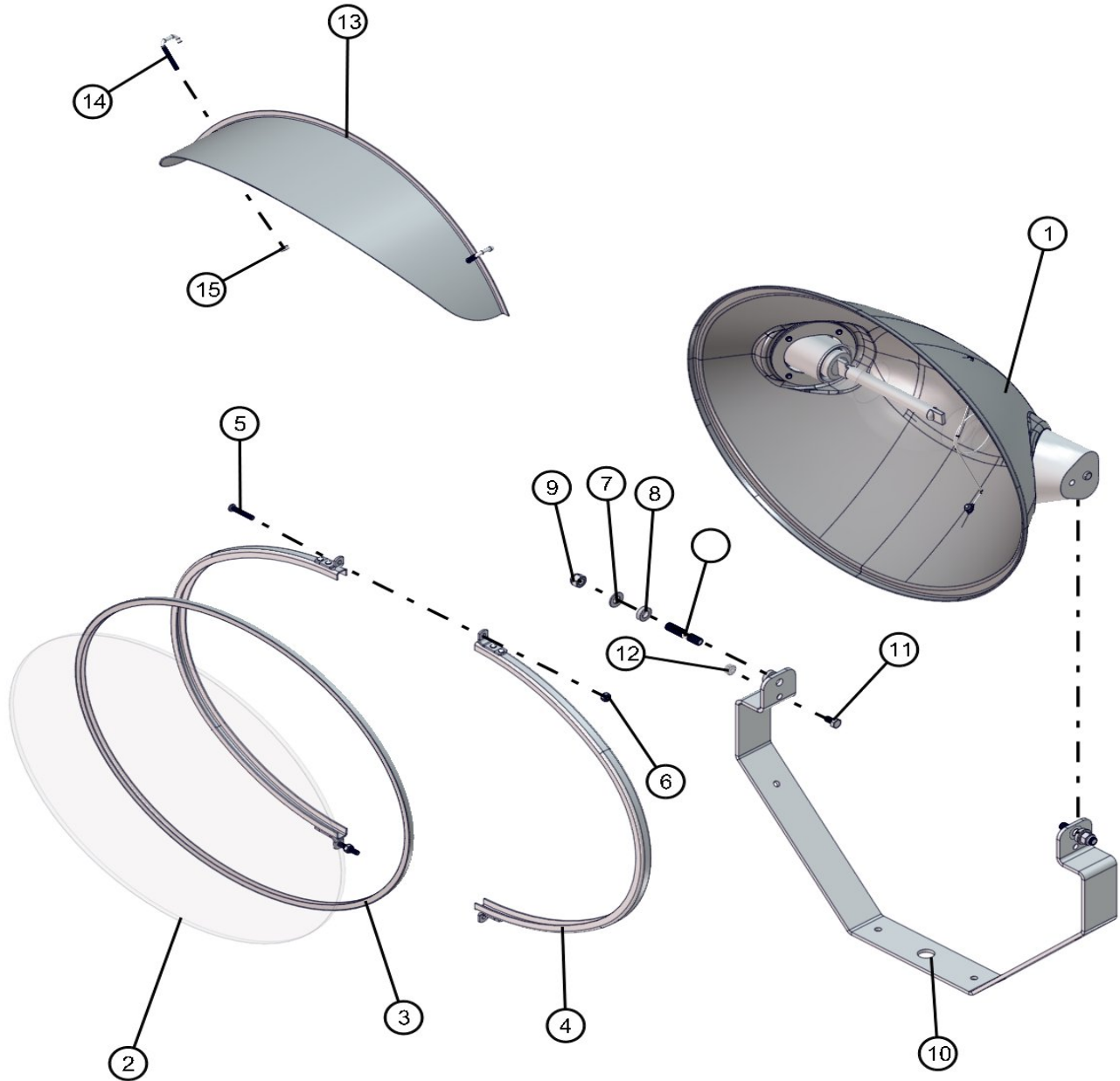
NO	QTY	PARTNO	DESCRIPTION
1	1	610211	LAMP 1000W BT37(MH)
2	1	610212	CERAMIC SOCKET
3	1	610207	INTERIOR COVER PLATE
4	1	610208	INTERIOR COVER PLATE
5	2	610213	GASKET
6	1	610205	SOCKET END CAP
7	1	610209	LAMP SUPPORT TIP
8	1	610206	SOCKET END CAP
9	2	045142	STUD 3/8-24 X 3/8-16 X 2"
10	8	041028	10-24 X 1/2 HEX MACH SCREW

NO	QTY	PARTNO	DESCRIPTION
11	1	610210	FIBERGLASS MESS TUBE 12"
12	3	022060	WIRE CAP SMALL
13	1	610214	ELBOW
14	1	610215	NIPPLE
15	1	610219	14 AWG GREEN 6"
16	1	022155	#10 ELEC. RING
17	1	510007	1/2 DIA CORD GRIP
18	1	041257	10-32 GROUND SCREW
19	1	310434	MALE CONNECTOR CABLE

NOTE: NS = NOT SHOWN. WHEN ORDERING, SPECIFY THE COLOR WANTED ON PARTS CONTAINING THE LETTER "P"

SHO LAMP HOLDER PORT-A-LITE

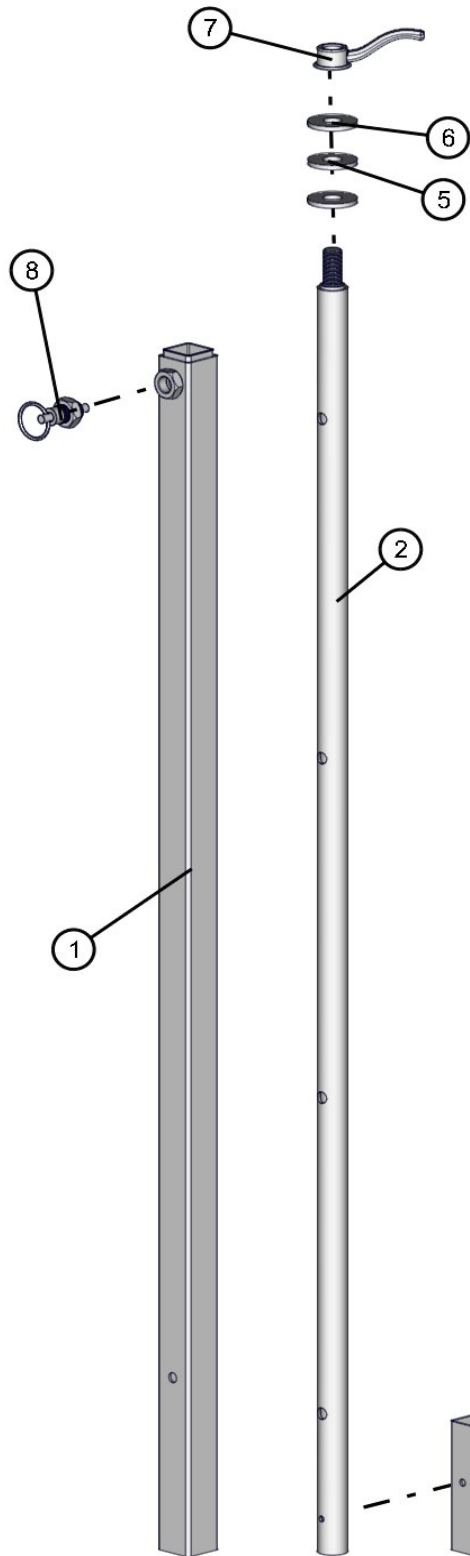
1/27/12



NO	QTY	PARTNO	DESCRIPTION
1	1	610201	REFLECTOR
2	1	610203F	FROSTED LENS
3	1	610217	SILICONE GASKET
4	2	610202	LENS CHANNEL SET
5	2	041036	#10-24 X 1 1/4 PH-ROUND HEAD MS SS
6	2	044019	#10-24 NYLOC HEX NUT SS
7	2	047016	3/8 FLAT WASHER SAE PL
8	4	047019	3/4 OD X .385 ID NYLON BUSHING
9	2	044037	3/8-24 NYLOCK HEX NUT PL
10	1	660130P	SOLID MOUNT YOKE
11	1	046005	1/4-20 X 1/2 HEX HEAD CS GR5 PL
12	1	044021	1/4-20 KEPS HEX NUT PL
13	1	610017	SAF-T VISOR (OPTION)
14	2	045070	#10-24 HOOK SQ BEND BOLT (OPTION)
15	2	044016	#10-24 KEPS HEX NUT PL (OPTION)

NOTE: NS = NOT SHOWN. WHEN ORDERING, SPECIFY THE COLOR WANTED ON PARTS CONTAINING THE LETTER "P"

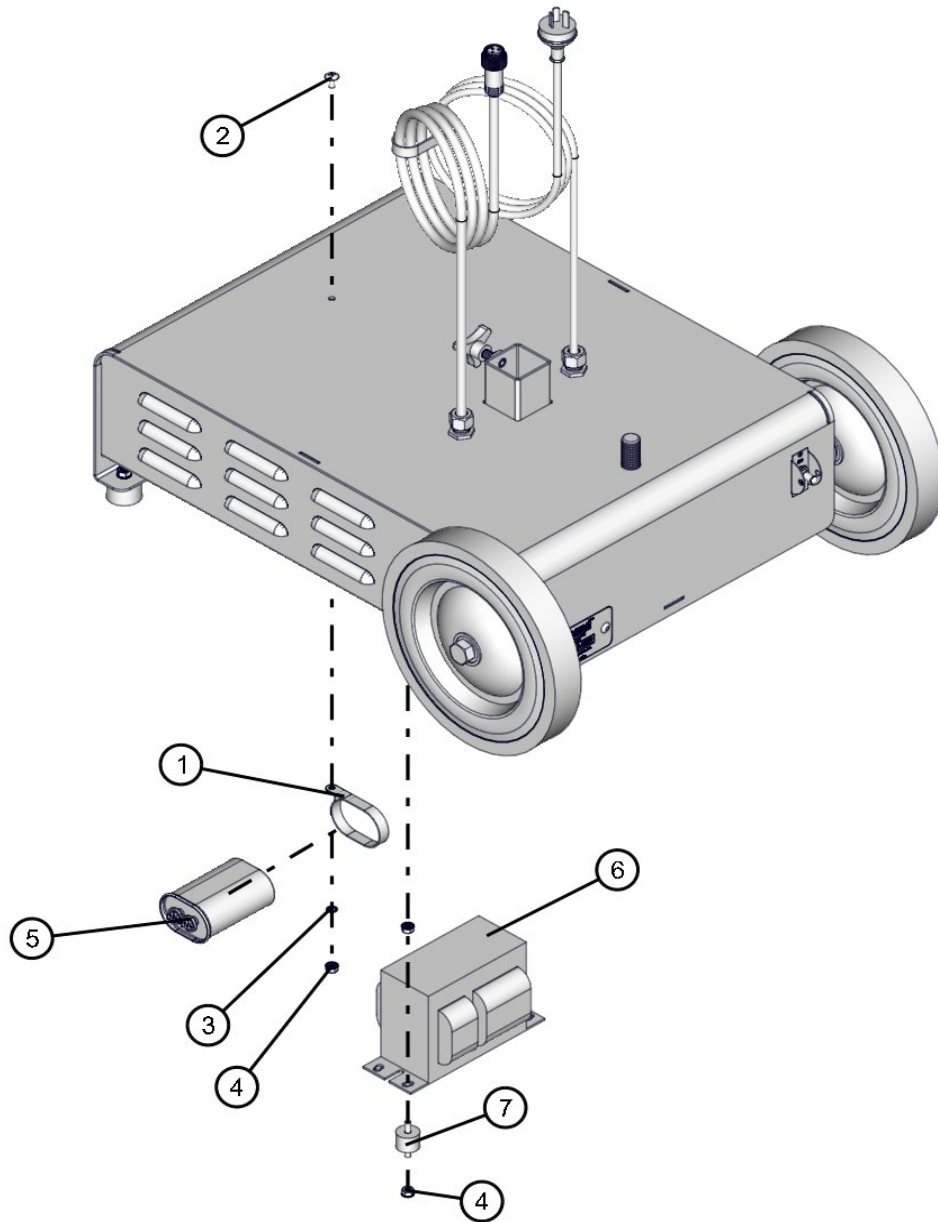
PORT-A-LITE



NO	QTY	PARTNO	DESCRIPTION
1	1	530405P	OUTER MAST
2	1	530361P	INNER MAST
3	1	530411	INSIDE GUIDE
4	1	045145	1/4 X 1 1/2 SPRING ROLL PIN PL
5	2	650550	.785 X 2" HDPE WASHER
6	1	047035	3/4 FLAT WASHER PL
7	1	630728	SHO HANDLE NUT
8	1	530409	SPRING LATCH

NOTE: NS = NOT SHOWN. WHEN ORDERING, SPECIFY THE COLOR WANTED ON PARTS CONTAINING THE LETTER "P"

PORT-A-LITE

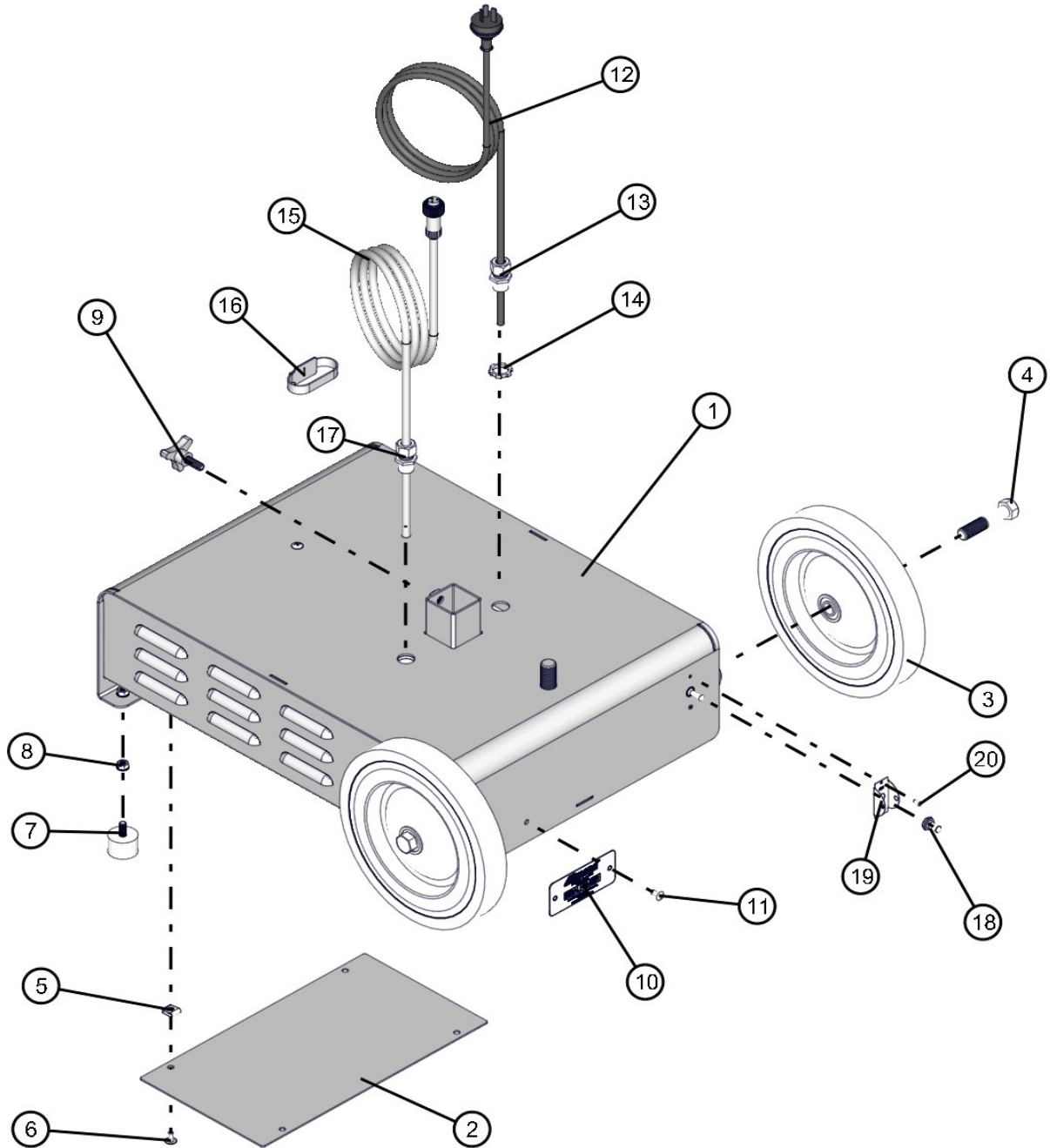


NO	QTY	PARTNO	DESCRIPTION
1	1	022026	CUSHION CLAMP 2 1/4
2	1	041078	1/4-20 X 1/2 PH-TRUSS HEAD MS SS
3	1	043050	1/4 INTL TOOTH LOCK WASHER
4	9	044021	1/4-20 KEPS HEX NUT PL
5	1	310115A	CAPACITOR (ONLY) 50Hz 26uF
6	1	310116A	BALLAST AND CAPACITOR 50HZ 1000W
7	4	330057	RUBBER BOX MOUNTS

NOTE: NS = NOT SHOWN. WHEN ORDERING, SPECIFY THE COLOR WANTED ON PARTS CONTAINING THE LETTER "P"

BASE PORT-A-LITE

1/27/12



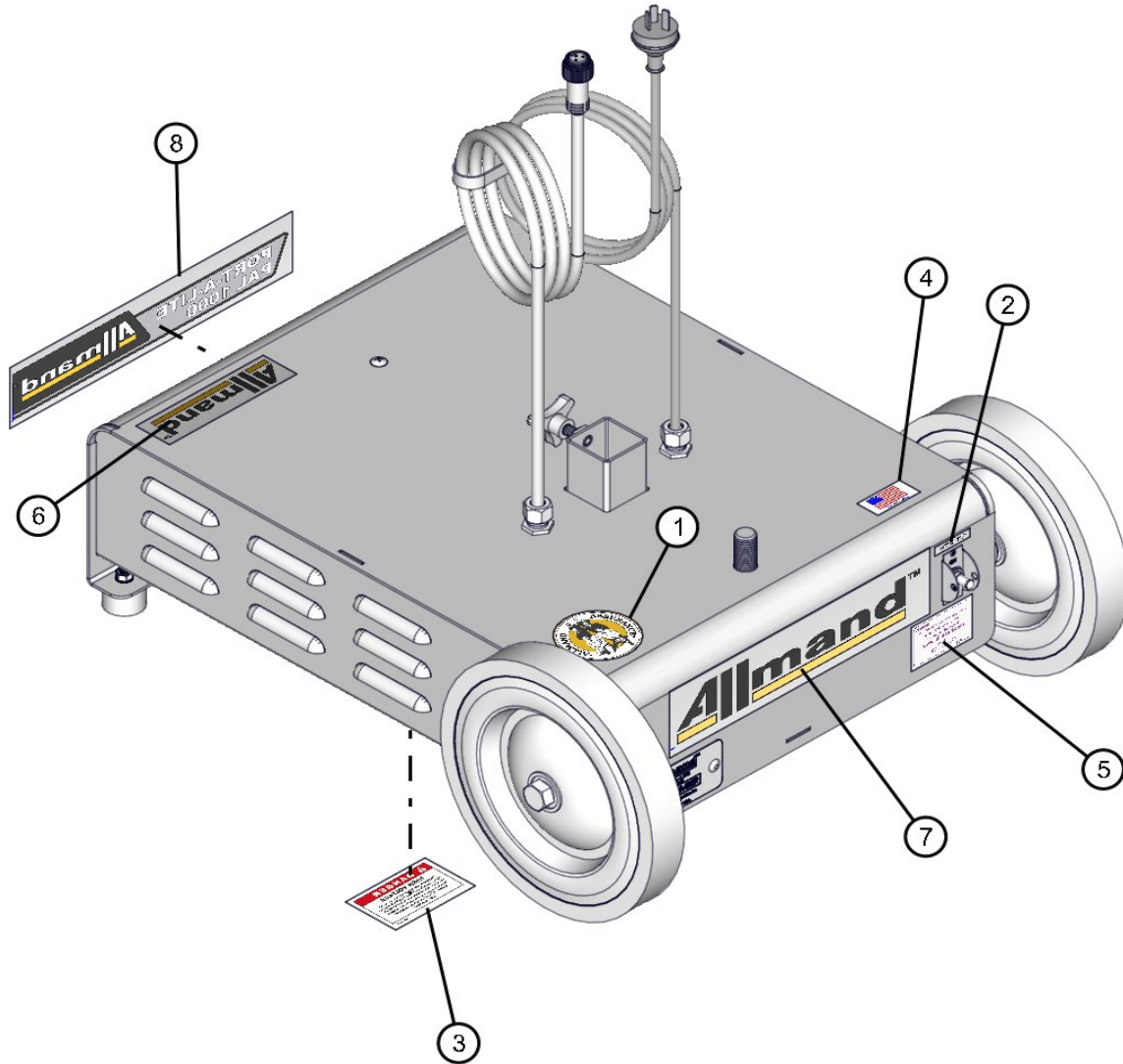
NO	QTY	PARTNO	DESCRIPTION
1	1	530360P	BASE
2	1	530404P	COVER
3	2	530128	10" X 2 1/2 WHEEL
4	2	046244	5/8-11 X 3 HEX HEAD CS GR5 PL
5	4	045216	1/4-20 TINNEMAN NUT
6	4	041078	1/4-20 X 1/2 PH-TRUSS HEAD MS SS
7	2	713578	RUBBER BUMPER
8	2	044031	5/16 -18 KEPS HEX NUT PL
9	1	530463	LOCK KNOB
10	1	530346	SERIAL PLATE
11	2	045118	1/4 X 1/2 RIVET

NO	QTY	PARTNO	DESCRIPTION
12	1	C103525	PRIMARY CORD
13	1	103561	1/2 DIA CORD GRIP .250-.350
14	2	022035	1/2 CORD GRIP NUT
15	1	530127	SECONDARY 16/3 CORD
16	1	068098	VELCRO TIE
17	1	510007	1/2 DIA CORD GRIP .312-.437
18	1	530124	BOOT SWITCH COVER
19	1	530125	SWITCH GUARD
20	2	045116	1/8 X 1/4 BLIND RIVET

NOTE: NS = NOT SHOWN. WHEN ORDERING, SPECIFY THE COLOR WANTED ON PARTS CONTAINING THE LETTER "P"

DECALS PORT-A-LITE

1/27/12



NO	QTY	PARTNO	DESCRIPTION
1	1	102088	3 GENERATIONS DECAL
2	1	090335	RESTART DECAL
3	1	090332	DISCONNECT DECAL
4	1	090385	MADE IN USA DECAL
5	1	090465	PARTS & SERVICE DECAL
6	1	090270	5 1/2 ALLMAND DECAL
7	1	090269	11 3/4 ALLMAND DECAL
8	1	103562	PAL 1000 DECAL

NOTE: NS = NOT SHOWN. WHEN ORDERING, SPECIFY THE COLOR WANTED ON PARTS CONTAINING THE LETTER "P"