



REVISED JANUARY 2018

**PAL 4000 GP  
OPERATOR'S MANUAL**

**ALLMAND BROTHERS INC.**

**P.O. BOX 888**

**HOLDREGE, NE 68949**

**FOR PARTS AND UPDATES VISIT ALLMAND ON THE WEB  
AT**

**[www.allmand.com](http://www.allmand.com)**

**PHONE: (308) 995- 4495, 1- 800- 562- 1373**

**ALLMAND FAX: (308) 995– 5887**

**ALLMAND PARTS DEPT. FAX : (308) 995– 4883**

Part No. 114003

**PORT A LITE SERIES**

## RECORD IMPORTANT INFORMATION

Company Equipment No.: \_\_\_\_\_

Unit Model No.: \_\_\_\_\_

Unit Vin No.: \_\_\_\_\_

Serial No.: \_\_\_\_\_

Accessories.: \_\_\_\_\_

# TABLE OF CONTENTS

---

---

## **Introduction**

---

About this Manual.....	4
------------------------	---

## **Safety**

---

Safety Definitions.....	5
Safety Precautions.....	5-9
Safety Labels .....	9
Check list.....	10

## **General Service Information**

---

Equipment Identification.....	11
Clearances.....	12
Models and Serial Numbers.....	13
Tower Lights.....	14

## **Operation**

---

Light Fixture Adjustment.....	14
Light Fixture Stowage.....	14
Pre Operation Set up.....	15
Raising & lowering Mast.....	15

## **Maintenance**

---

Troubleshooting Chart.....	16
Maintenance Record.....	17

## **Schematics**

---

## **Parts Book**

---

# INTRODUCTION

---

Congratulations on the purchase of your new Allmand PAL 4000 GP light tower and welcome to the Allmand family of equipment owners.

The Allmand PAL 4000 GP light tower offers many advantages to make operation safer, more convenient and more cost-effective. The PAL 4000 GP light towers will provide you with high-quality performance and durability which translates into more productivity on the job site.

## ABOUT THIS MANUAL

**Take time to read this manual thoroughly.**

This *Operator's Manual* provides information necessary for the safe operation of the Allmand Bros. Inc. PAL 4000 GP light tower.

**NOTICE:** Keep this manual accessible during operation to provide convenient reference. Store this manual in a safe place for future reference.

If you are uncertain about any of the information in the manual, contact Allmand or your Allmand dealer for clarification before operation.

Specific operating instructions and specifications are contained in this publication to familiarize the operator and maintenance personnel with the correct and safe procedures necessary to maintain and operate the equipment.

The graphics and text in this manual generally describe the Allmand PAL 4000 GP light tower. Allmand light tower differ by model and optionally installed equipment. Your Allmand light tower may not exactly match the graphics and /or text descriptions in this manual.

**NOTICE:** The information found in this manual was in effect at the time of printing. Allmand Bros. may change contents without notice and without incurring obligation.

**NOTICE:** Any reference in this manual to left or right shall be determined by looking at the trailer from the rear.





# SAFETY

## SAFETY DEFINITIONS

Safety statements are one of the primary ways to call your attention to potential hazards. Follow the precautions listed throughout the manual before operation, during operation and during periodic maintenance procedures for your safety, the safety of others and to protect the performance of the equipment. Keep the decals from becoming dirty or torn and replace them if they are lost or damaged. Also, if a part needs to be replaced that has a decal attached to it, make sure to order the new part and decal at the same time.



This safety alert symbol appears with most safety statements. It means attention, become alert, your safety is involved! Please read and abide by the message that follows the safety alert symbol.

### DANGER

Indicates a hazardous situation which, if not avoided, **will** result in death or serious injury.

### WARNING

Indicates a hazardous situation which, if not avoided, **could** result in death or serious injury.

### CAUTION

Indicates a hazardous situation which, if not avoided, **could** result in minor or moderate injury.

### NOTICE

Indicates a situation which can cause damage to the equipment, personal property and/or the environment, or cause the equipment to operate improperly.

Note: Provides key information to make procedures easier or clearer.

## SAFETY PRECAUTIONS

There is no substitute for common sense and careful practices. This information contains general safety precautions and guidelines that must be followed to reduce risk to personal safety. Special safety precautions are listed in specific procedures. Read and understand all of the safety precautions before operating or performing repairs or maintenance. This safety section cannot cover every situation that may occur that is incidental to the use of the equipment. Use common sense if you encounter a situation that is not covered to help avoid a hazardous situation.

Refer to the *Engine Operator's Manual* and *Generator Operator's Manual* for additional safety precautions.

### DANGER

The safety messages that follow have **DANGER** level hazards.

### Electrocution Hazard



- Always check for overhead wires and obstructions before raising or lowering the light tower. Allow 35 feet (10.6 m) of clearance.
- High voltage is present when engine is running. Never attempt to service electrical components while engine is running.
- Do not operate the light tower if the insulation on the electrical cord or other electrical wiring is cut or worn, or if bare wires are exposed. Repair or replace damaged wiring before starting the engine.



# SAFETY

## WARNING

The safety messages that follow have WARNING level hazards.

### Unsafe Operation Hazard



- Never permit anyone to install or operate the equipment without proper training.
- Read and understand this *Operator's Manual*, the *Engine Operator's Manual* and *Generator Operator's Manual* before operating or servicing the light tower to ensure that safe operating practices and maintenance procedures are followed.
- Safety signs and decals are additional reminders for safe operating and maintenance techniques.

### Fall Hazard

Never carry riders on the equipment.

### Modification Hazard

Never modify the equipment without written consent of the manufacturer. Any modification can affect the safe operation of the equipment.

### Exposure Hazard



A0055010

Always wear personal protective equipment, including appropriate clothing, gloves, work shoes, and eye and hearing protection, as required by the task at hand.

### Rollover Hazard

- Do not raise, lower or use light tower unless all outriggers and jacks are positioned on firm ground.
- Never move or reposition the light tower while the light tower is in the vertical position.

### Explosion Hazard



- While the engine is running or the battery is charging, hydrogen gas is being produced and can be easily ignited. Keep the area around the battery well-ventilated and keep sparks, open flame and any other form of ignition out of the area.
- Always disconnect the negative (-) battery cable before servicing the equipment.
- Only use the starting procedure as described in the *Engine Operator's Manual* to start the engine.
- Never charge a frozen battery. Always slowly warm the battery to room temperature before charging.

### Fire and Explosion Hazard

- Diesel fuel is flammable and explosive under certain conditions.
- Never use a shop rag to catch the fuel.
- Wipe up all spills immediately.
- Never refuel with the engine running.
- Store any containers containing fuel in a well-ventilated area, away from any combustibles or sources of ignition.



# SAFETY

## WARNING

The safety messages that follow have WARNING level hazards.

### Exhaust Hazard



All internal combustion engines create carbon monoxide gas during operation and special precautions are required to avoid carbon monoxide poisoning:

- Never block windows, vents or other means of ventilation if the equipment is operating in an enclosed area.
- Always ensure that all connections are tightened to specifications after repair is made to the exhaust system.

### Entanglement / Sever Hazard



- Always stop the engine before beginning service.
- If the engine must be serviced while it is operating, remove all jewelry, tie back long hair and keep hands, other body parts and clothing away from moving/rotating parts.
- Verify that all guards and covers are attached properly to the equipment before starting the engine. Do not start the engine if any guards or covers are not properly installed on the equipment.
- Attach a “Do Not Operate” tag near the key switch while performing maintenance on the equipment.

### Alcohol and Drug Hazard



Never operate the light tower while under the influence of alcohol or drugs, or when ill.

### Piercing Hazard



- Avoid skin contact with high-pressure hydraulic fluid or diesel fuel spray caused by a hydraulic or fuel system leak such as a broken hydraulic hose or fuel injection line. High-pressure hydraulic fluid or fuel can penetrate your skin and result in serious injury. If you are exposed to high-pressure hydraulic fluid or fuel spray, obtain prompt medical treatment.
- Never check for a hydraulic fluid or fuel leak with your hands. Always use a piece of wood or cardboard.

### Flying Object Hazard



Always wear eye protection when cleaning the equipment with compressed air or high-pressure water. Dust, flying debris, compressed air, pressurized water or steam may injure your eyes.

### Coolant Hazard



Wear eye protection and rubber gloves when handling engine coolant. If contact with the eyes or skin should occur, flush eyes and wash immediately with clean water.

# SAFETY

---

---

## **WARNING**

The safety messages that follow have WARNING level hazards.

---

### **Burn Hazard**



- Light fixtures and some of the engine surfaces become very hot during operation and shortly after shutdown.
- Keep hands and other body parts away from hot engine surfaces.
- Handle hot components, such as light fixtures, with heat-resistant gloves.

## **CAUTION**

The safety messages that follow have CAUTION level hazards.

---

### **Tool Hazard**

Always use tools appropriate for the task at hand and use the correct size tool for loosening or tightening equipment parts.

---

### **Slip Hazard**

- Immediately clean up any spilled liquid on the shop floor.
- Clean up accumulated dirt and debris on the shop floor at the end of each shift.



# SAFETY

---

## NOTICE

The safety messages that follow have NOTICE level hazards.

---

Any part which is found defective as a result of inspection or any part whose measured value does not satisfy the standard or limit must be replaced.

---

Always tighten components to the specified torque. Loose parts can cause equipment damage or cause it to operate improperly.

---

Only use replacement parts specified. Other replacement parts may affect warranty coverage.

---



Follow the guidelines of the EPA or other governmental agencies for the proper disposal of hazardous materials such as engine oil, diesel fuel and engine coolant. Consult the local authorities or reclamation facility.

Clean all accumulated dirt and debris away from the body of the equipment and its components before you inspect the equipment or perform preventive maintenance procedures or repairs. Operating equipment with accumulated dirt and debris will cause premature wear of equipment components. Accumulated dirt and debris also hinders effective equipment inspection.

---

Never dispose of hazardous materials by dumping them into a sewer, on the ground, or into groundwater or waterways.

---

Retrieve any tools or parts that may have dropped inside of the equipment to avoid improper equipment operation.

---

If any alert indicator illuminates during equipment operation, stop the engine immediately. Determine the cause and repair the problem before continuing to operate the equipment.

## SAFETY LABELS

**WARNING! *Unsafe Operational Hazard. Always replace any safety and instruction decals that become damaged, painted or otherwise illegible.***

# SAFETY

---

## PREPARING THE PAL 4000 GP

The PAL 4000 GP light tower requires service as well as proper operation in order to provide the performance and safety it has been designed for. Never deliver or put machine into service with known defects or missing instructions or decals. Always instruct the customer in proper operation and safety procedures as described in this *Operator's Manual*. Always provide the manual with the equipment for proper and safe operation.

### CHECK LIST

- Visually inspect the equipment to ensure that all instructions and decals are in place and legible.
- Inspect the light assemblies for damage and test for proper operation.
- Inspect the electrical wiring for signs of damage. **Danger! *Electrocution Hazard.***

***Do not operate the light tower if the insulation on the electrical cord or other electrical wiring is cut or worn, or if bare wires are exposed. Repair or re place damaged wiring before starting the engine.***

- Check to make sure the *Light Tower Operator's Manual* is with the equipment.
- Check to make sure the quick reference operation card is with the equipment and properly tethered.
- Inspect the machine physically for damage and repair if necessary.

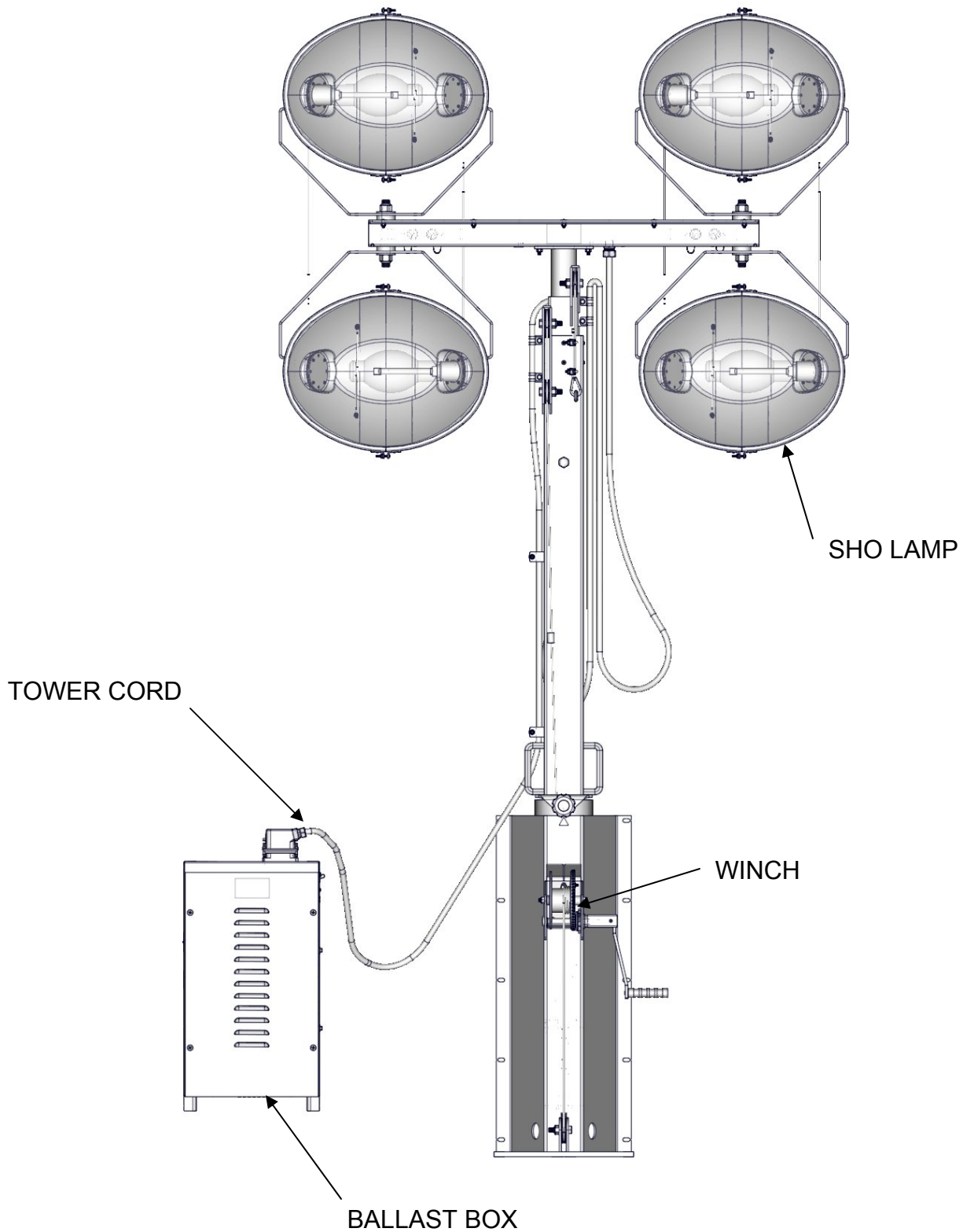
**After completing the pre-operation check list, operate the tower through a complete operation cycle, following the operating instructions in the PAL 4000 GP Operator's Manual.**

**Warning! *Unsafe operation Hazard. Never permit anyone to install or operate the equipment without proper training.***

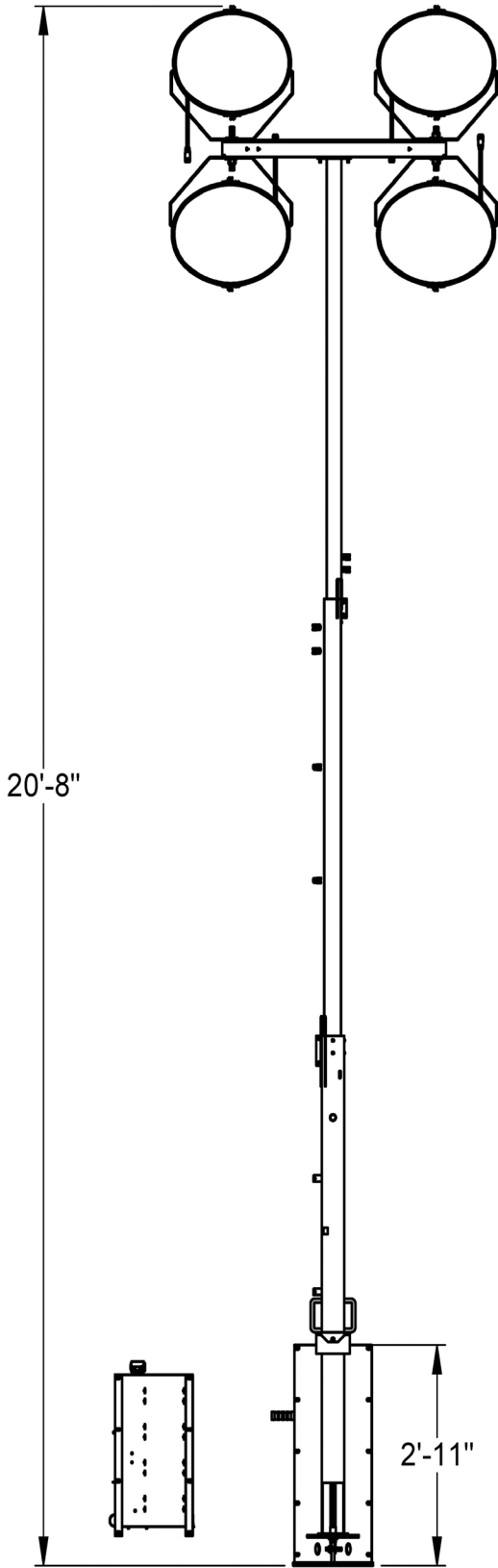
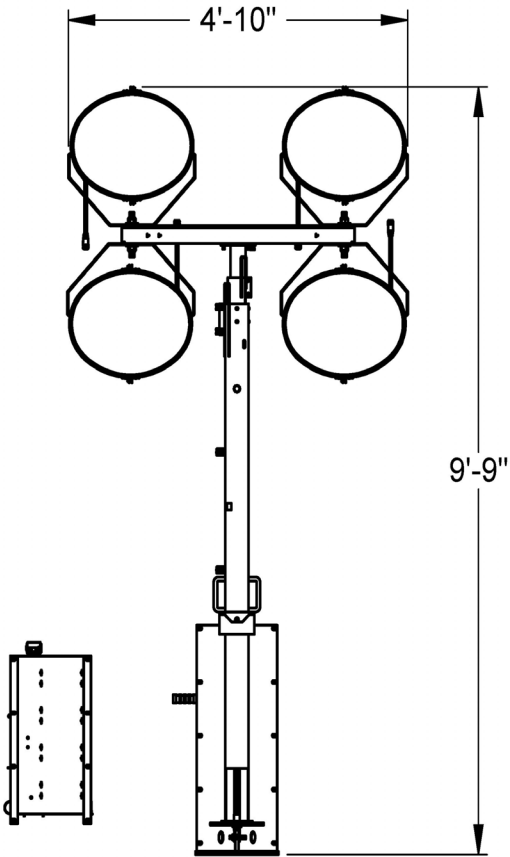
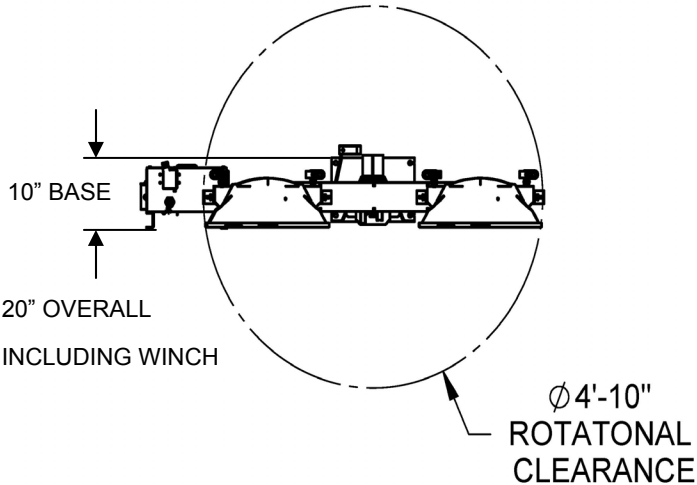
**ALWAYS READ AND UNDERSTAND THE INSTRUCTIONS FIRST.**

# GENERAL SERVICE INFORMATION

## EQUIPMENT IDENTIFICATION



# GENERAL SERVICE INFORMATION





# GENERAL SERVICE INFORMATION

## MODEL AND SERIAL NUMBERS

Model and serial number information is required for product support and repair parts.

All PAL 4000 GP towers have a serial number plate attached to the left side of the ballast box, or opposite side of light switches.

## Tower Lights

SHO - HD 1000W Metal Halide (lumen rating: 110,000)	Standard
	Warm - up time: 2-4 minutes
	Re - start time: 10 to 15 minutes
Four Fixtures	Standard (sealed for all weather use)
Light Fixture Weight	15 lbs (6.75 kg)
<b>Individual Light Switches</b>	
1000W Light Switch (4 per 4 lights)	Standard

# OPERATION

## LIGHT FIXTURE ADJUSTMENT

**WARNING! BURN HAZARD.** The light fixtures become extremely hot during use. Always use caution and heat resistant gloves when handling the lights or allow the lights to cool sufficiently before handling.

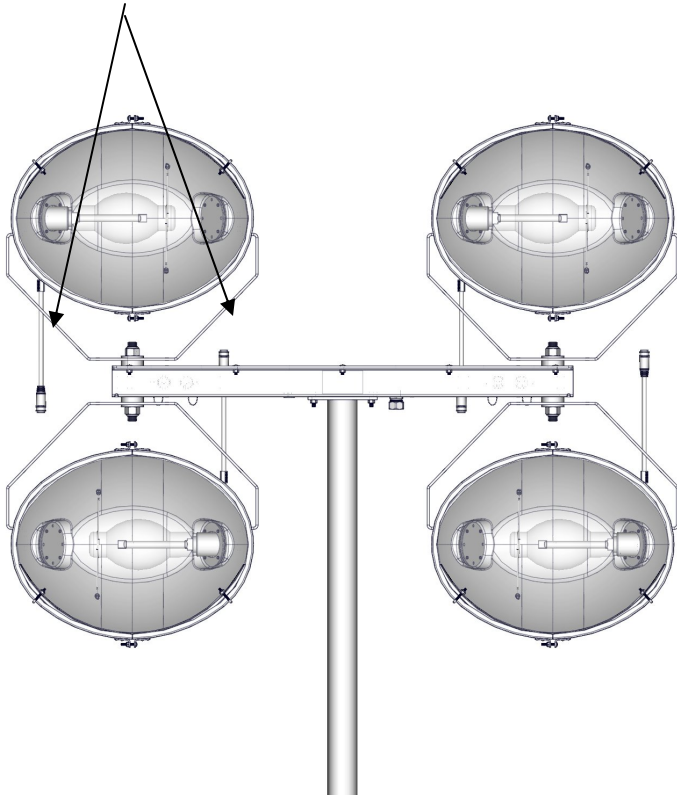
The light fixtures must be adjusted to the desired work angle before raising the tower.

With the tower fully lowered and the lights off, the light fixtures can be rotated to the desired working position.

To adjust each light fixture, manually swivel each light fixture at its base into the desired position.

## GRAB LIGHT FIXTURES

HERE TO ADJUST



## LIGHT FIXTURE STOWAGE

Your light tower may be equipped with lights that can be removed for stowage or for theft prevention.

**WARNING! BURN HAZARD.** The light fixtures become extremely hot during use. Always use caution and heat resistant gloves when handling the lights or allow the lights to cool sufficiently before handling.

1. Ensure lights are off and tower is lowered to the full down position.
2. Disconnect the electrical cord from each light.
3. While supporting the light fixture, remove the nut and washer assembly fastening the main fixture bracket and remove each light fixture and bracket.
4. Store each light fixture to avoid any damage or theft.

## LIGHT CONTROLS

The four lights are controlled and protected by four breaker switches located on the side of the ballast box.



# OPERATION

---

Before performing any operation procedures read Safety on page 5-9.

## PRE - OPERATION SETUP

### Work Site Safety Considerations

#### Height

**DANGER! *Electrocution Hazard. Always check for overhead wires and obstructions before raising or lowering the light tower. Allow 35 feet (10.6 m) of clearance.***

#### Pre-Operation Check List

Always perform the following checks before traveling to the work site and before operation. Repair or replace any components as required before operation.

**After completing the pre-operation check list, operate the light tower through a Complete operation cycle.**

- Visually inspect the equipment to ensure that all instructions and decals are in place and legible.
- Inspect the light assemblies for damage and test for proper operation.
- Inspect electrical wiring for signs of damage.

**WARNING! *Electrocution Hazard. Do not operate the light tower if the insulation on the electrical cord or other electrical wiring is cut or worn, or if bare wires are exposed.***

## RAISING AND LOWERING LIGHTS

### Manual Winch Light Tower

*NOTE;* The manual winch tower can be raised and extended by operating a hand crank winch. Mounted on the tower extends and retracts the telescopic sections.

#### Raising

1. Turn the lights off.
2. Before raising the light tower, adjust the tower lights to the desired work position.
3. Operate the hand crank winch clockwise to raise the lights vertically.
4. To rotate lights, turn black knob counterclockwise and turn the tower with handles provided.

#### Lowering

1. Turn lights off.
2. Loosen upper black knob and rotate tower until handles are parallel with the front of the unit and retighten knob.
3. Operate hand crank winch counterclockwise to lower the lights to the lowest vertical position.

## MAINTENANCE

### ELECTRICAL SYSTEM

#### Ballast Panel

The ballast panel can be accessed by removing the front panel cover. The ballast panel contains the four tower light lamp ballast and capacitors.

**The Safety messages that follow have WARNING level Electrocutation Hazards.**

- **Only qualified electricians should service or perform replacement procedures. Ballast and capacitors are capable of discharging high voltage. Always use appropriate personal safety clothing and gear when servicing electrical components.**

- **High voltage is present when engine is running. Never attempt to service electrical components while engine is running.**
- **Do not operate the light tower if the insulation on the electrical wiring is cut or worn, or if bare wires are exposed. Repair or replace damaged wiring before starting the engine.**

### TROUBLESHOOTING CHART

PROBLEM	POSSIBLE CAUSE
No light (one or more lights)	1. Circuit breakers in the outlet box are not turned on or have tripped.
	2. Lamps are not allowed time to cool after last being lit. You must allow 15 min. between the time the lights are shut off and the time they are turned on.
	3. The lamp or lamps are burned out or broken.
	4. One or more of the lamps are not screwed in securely.
	5. Plug socket at light bar are not securely pushed in and locked.
	6. The temperature of the ballast is below -20° F (-29° C). The efficiency of the capacitor in the ballast is not enough to ignite the lamps. For operations where the temperature of the ballast falls below -20° F (-29° C), some means of warming the ballast must be used.
	7. Low electrical system voltage.
	8. A loose connection in the back of the lamp socket in the holder.
	9. A circuit breaker or breakers are defective.
	10. A loose connection in the terminal board.
	11. A wrong style replacement lamp (requiring a different ballast) has been installed.
	12. Too much power is being drawn from the auxillary outlets.
	13. Capicitor and transformer have failed.
	14. Corrosion has occurred in the lamp base.

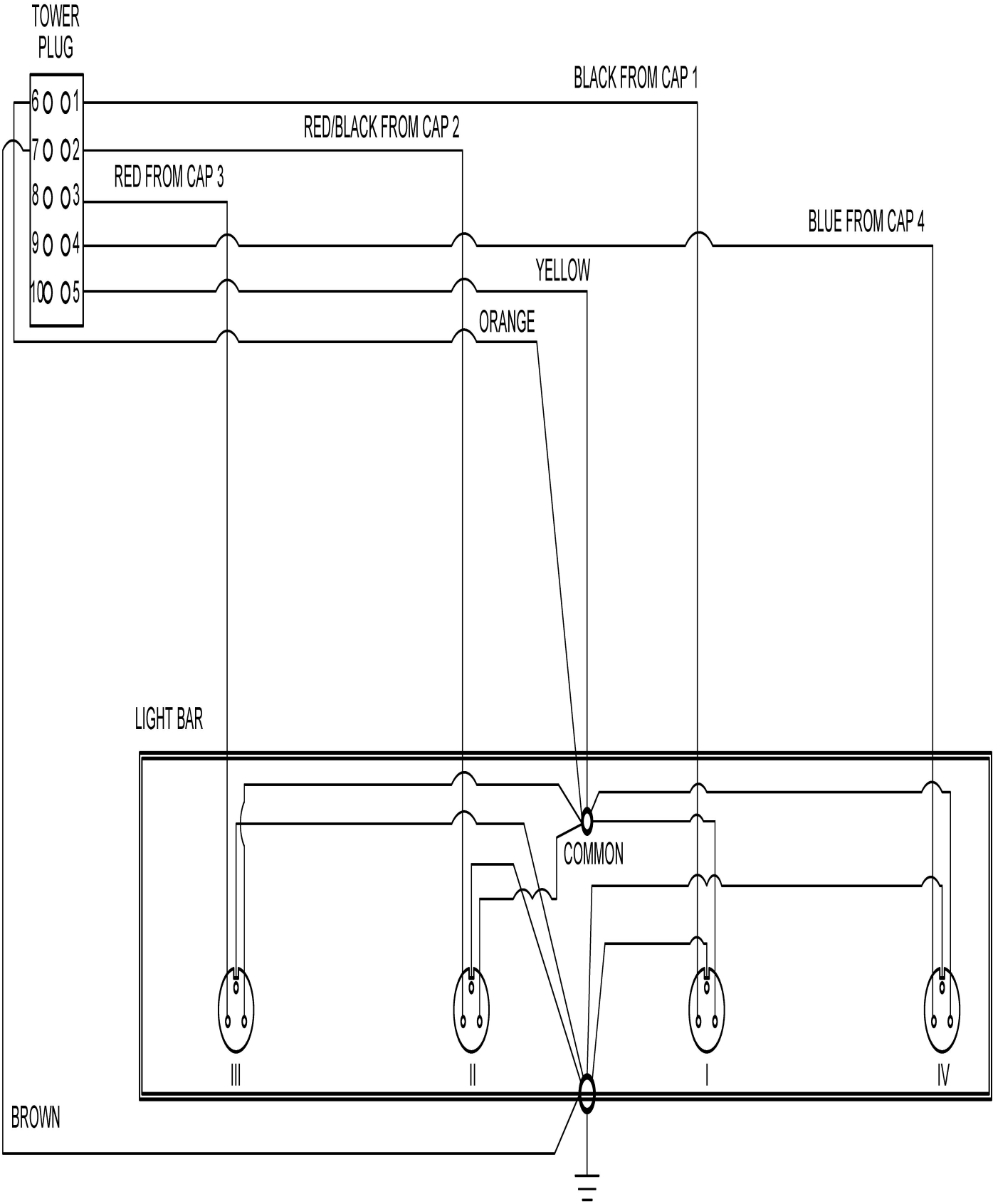
# MAINTENANCE RECORD

DATE	SERVICE DESCRIPTION	SERVICED BY

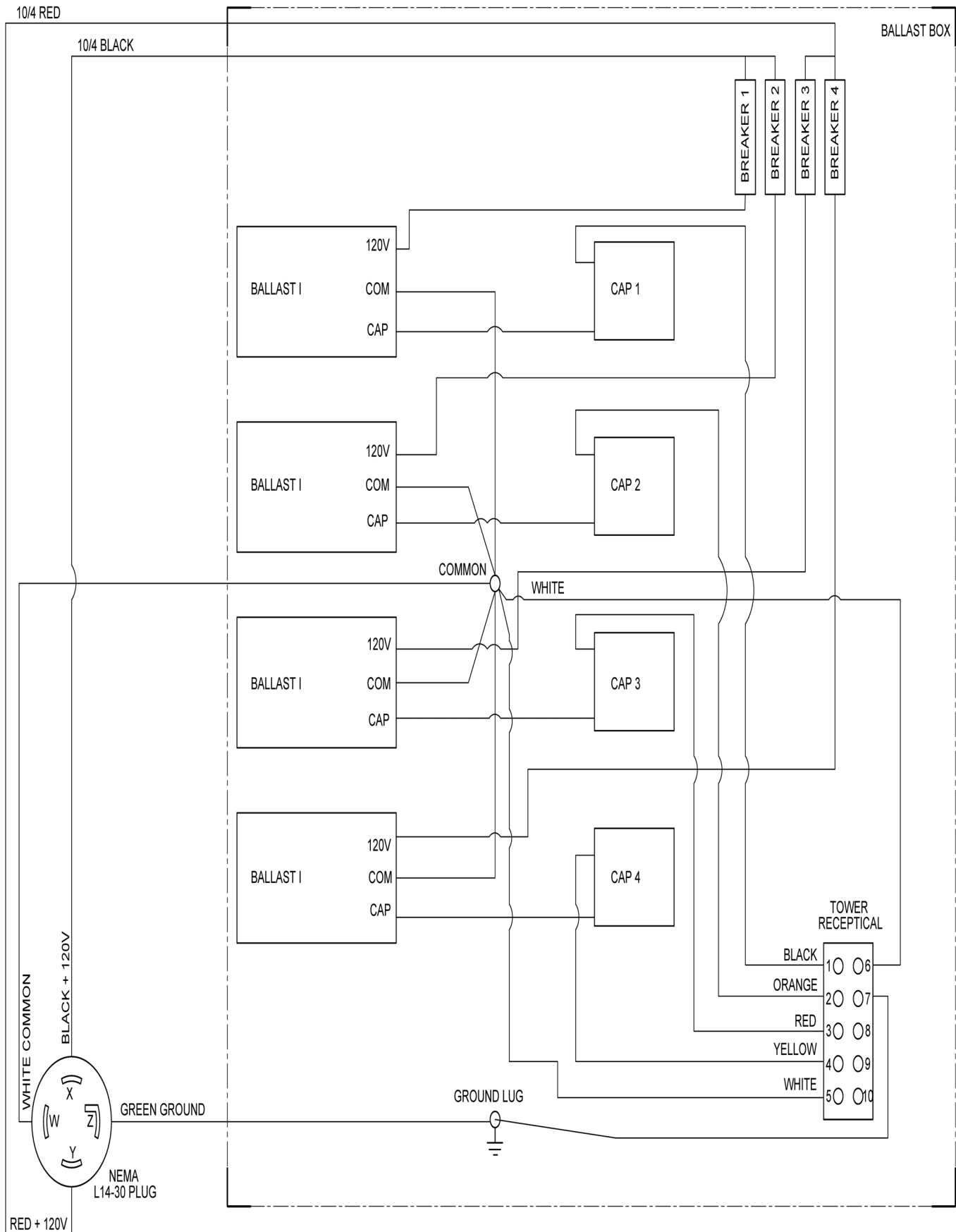
---

**THIS PAGE  
INTENTIONALLY BLANK**

# LIGHT BAR SCHEMATICS



# BALLAST BOX SCHEMATICS







REVISED MARCH 2011

**SHEDLIGHT  
PAL 4000 GP  
PARTS MANUAL**

**ALLMAND BROTHERS INC.  
P.O. BOX 888  
HOLDREGE, NE 68949**

**PHONE: (308) 995- 4495, 1- 800- 562- 1373  
ALLMAND FAX: (308) 995- 5887  
ALLMAND PARTS DEPT. FAX : (308) 995- 4883**

**[www.allmand.com](http://www.allmand.com)**

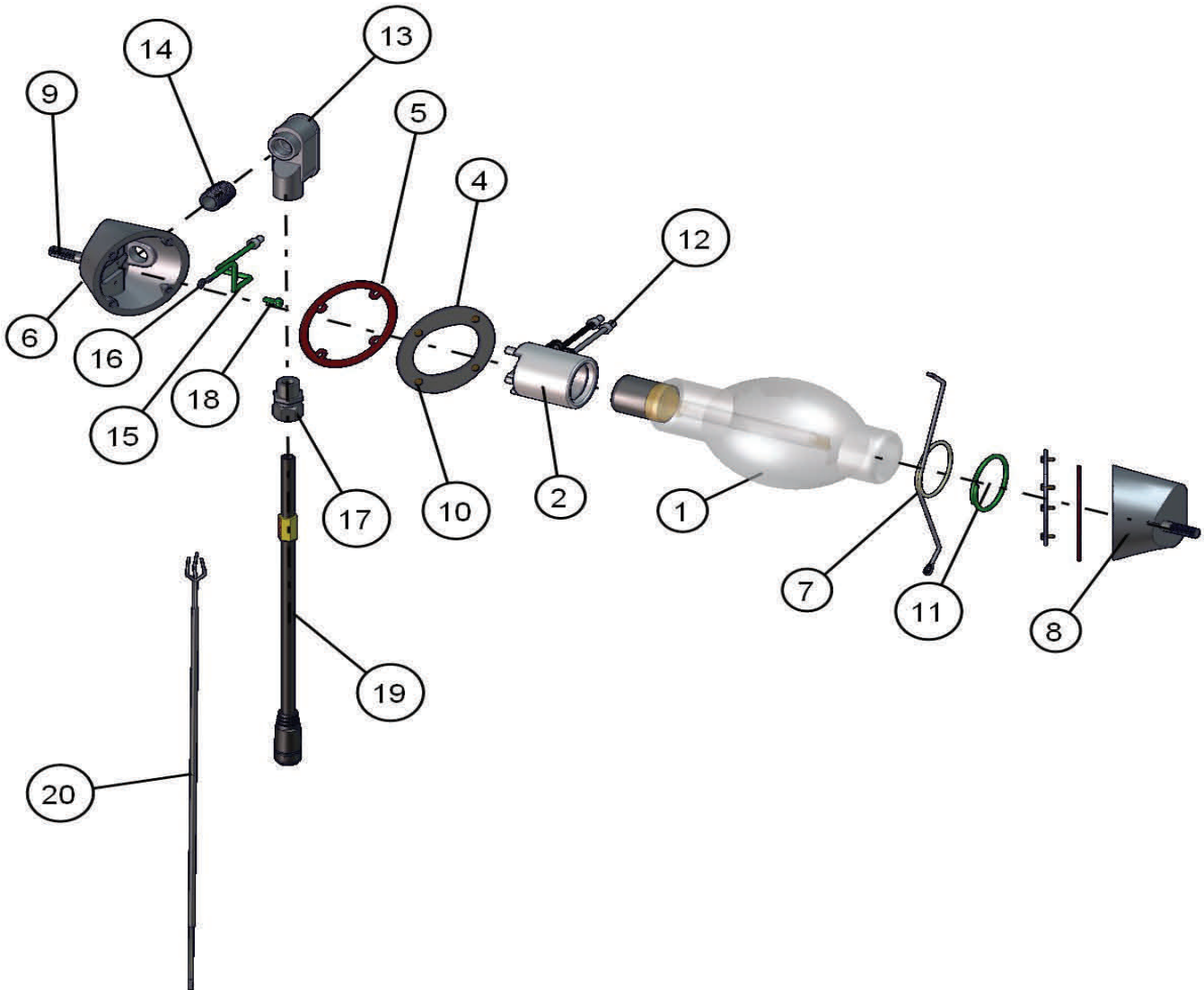
**PAL 4000 GP**

INDEX  
**PAL 4000 GP**

---

1000 SHO LAMP.....	3
1000 SHO LAMP FIXTURE .....	4
1000 SHO LAMP ASSEMBLIES .....	5
LIGHT BAR .....	6
2 5/8 ROUND TOWER SECTION .....	7
3in TOWER SECTION .....	8
4in TOWER SECTION .....	9
TOWER SUPPORT BASE .....	10
BALLAST BOX .....	11
BALLAST BOX COVER .....	12
TOWER MAST CORD .....	13

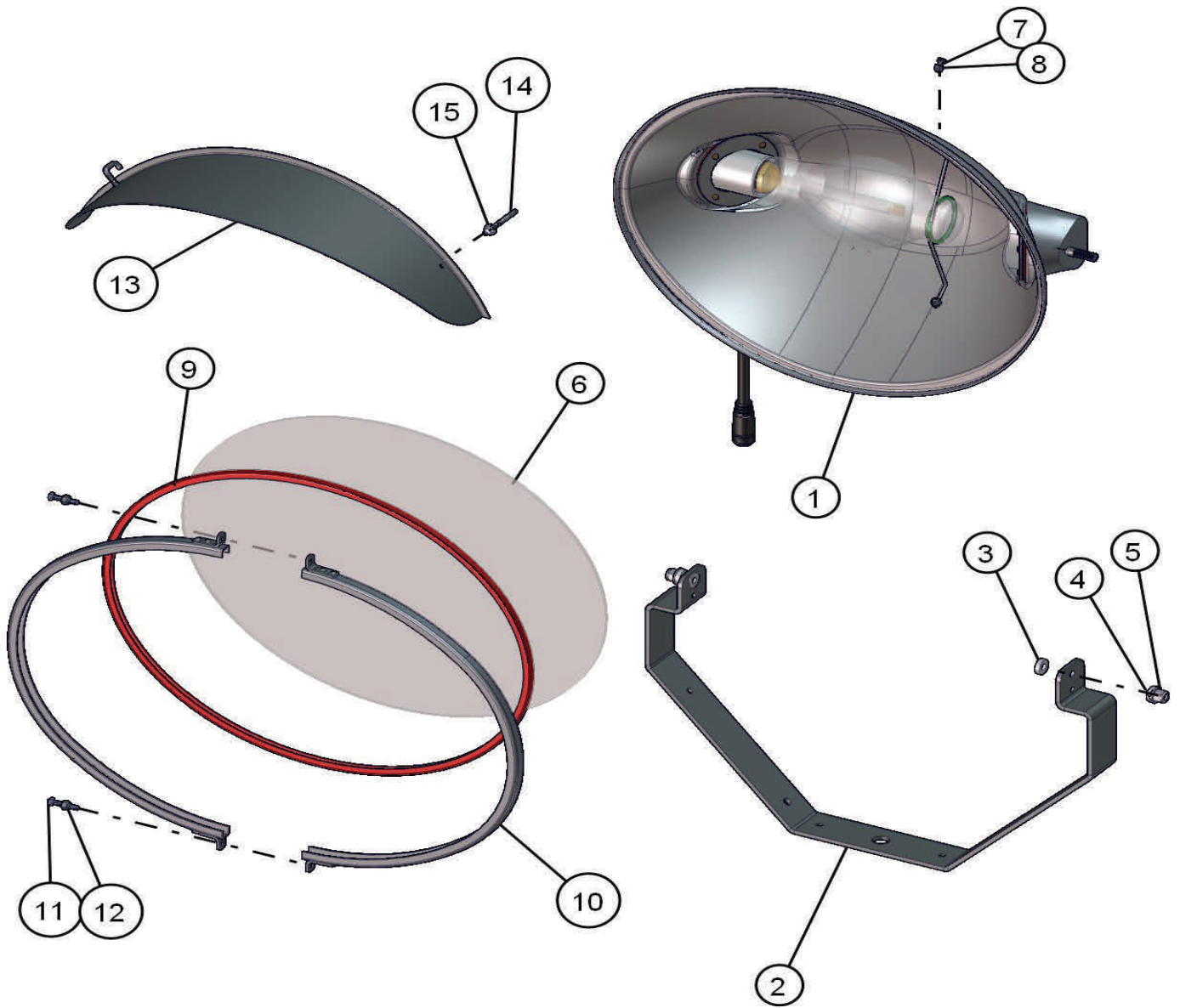
# SHO 1000 LAMP PAL 4000 GP



NO	QTY	PARTNO	DESCRIPTION
1	1	610211	LAMP 1000W BT37(MH)
2	1	610212	CERAMIC SOCKET
4	1	610208	INTERIOR COVER PLATE
5	2	610213	GASKET
6	1	610205	SOCKET END CAP, w. STOP BOSS
7	1	610209	LAMP SUPPORT TIP
8	1	610205	SOCKET END CAP, w. STOP BOSS
9	2	045142	STUD 3/8-24 X 3/8-16 X 2"
10	8	041028	10-24 X 1/2 HEX MACH SCREW
11	1	610210	FIBERGLASS MESS TUBE 12"
12	3	022060	WIRE CAP SMALL
13	1	610214	ELBOW
14	1	610215	NIPPLE
15	1	020133	14 AWG GREEN 6"
16	1	022155	#10 ELEC. RING
17	1	510007	1/2 DIA CORD GRIP
18	1	041257	10-32 GROUND SCREW
19	1	310434	MALE CONNECTOR CABLE (OPTION)
20	1	650159	16/3 X 68 HARD WIRED LEAD (OPTION)

NOTE: NS = NOT SHOWN. WHEN ORDERING, SPECIFY THE COLOR WANTED ON PARTS CONTAINING THE LETTER "P"

# SHO 1000 LAMP FIXTURE PAL 4000 GP



NO	QTY	PARTNO	DESCRIPTION
1	1	610201	REFLECTOR
2	1	680493P	YOKE MOUNT
3	4	047019	3/4 OD X .385 ID NYLON BUSHING
4	2	047016	3/8 SAE FLAT WASHER
5	2	044037	3/8-24 NYLOC NUT
6	1	610203	LENS FROSTED
7	2	041200	8-32 X 1/2 HEX MACH SCREW
8	2	044013	#8-32 NYLOCK NUT
9	1	610217	SILICONE GASKET
10	2	610202	LENS CHANNEL
11	2	041036	10-24 X 1 1/4 SS RHMSPH
12	2	044019	10-24 NYLOC NUT
13	1	610017A	SAF-T VISOR (OPTION)
14	2	045070	#10-24 HOOK SQ BD BOLT (OPTION)
15	2	044023	1/4-20 NYLOCK NUT (OPTION)

NOTE: NS = NOT SHOWN. WHEN ORDERING, SPECIFY THE COLOR WANTED ON PARTS CONTAINING THE LETTER "P"

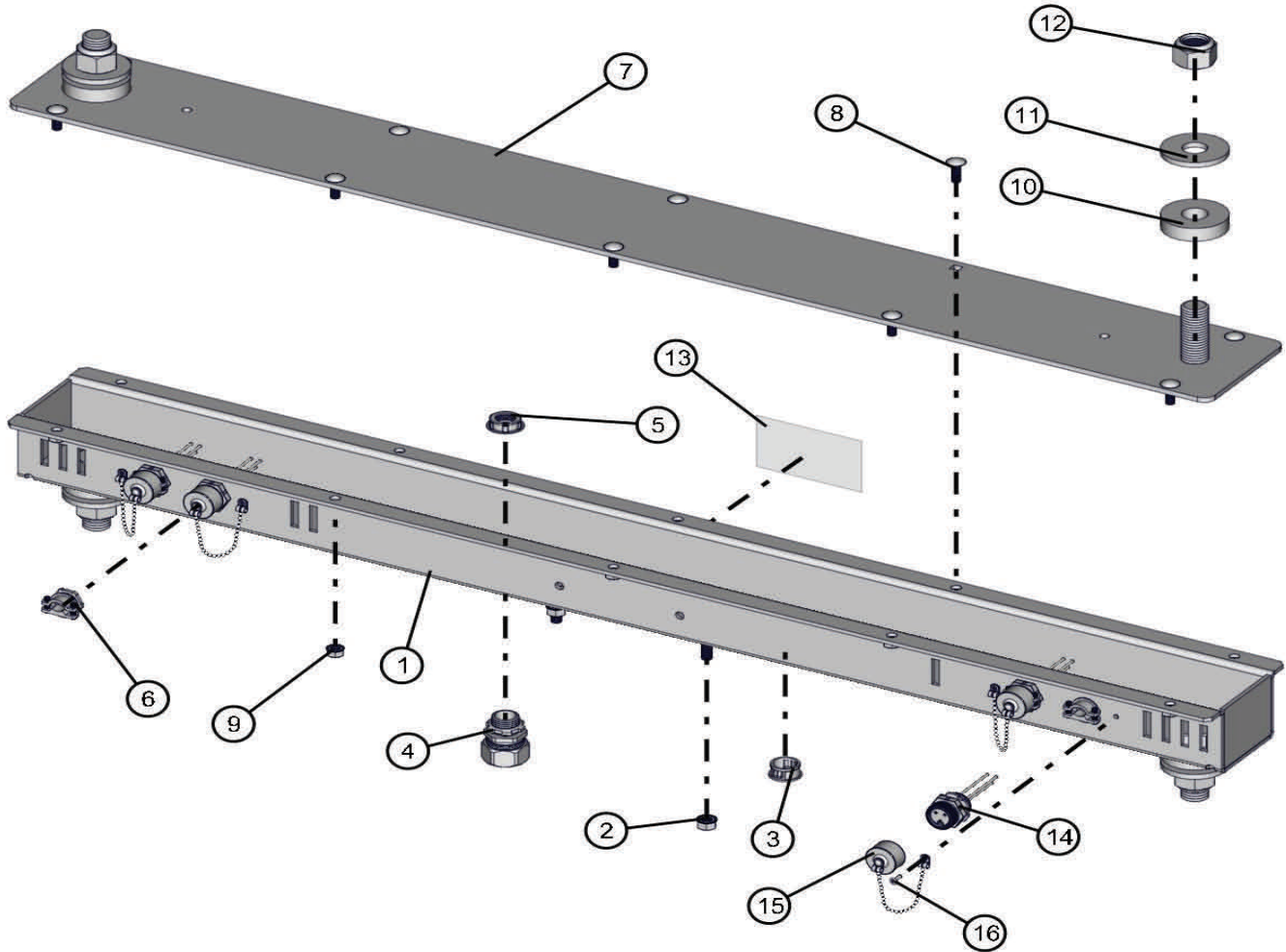
# SHO 1000 LAMP ASSEMBLIES

## **PAL 4000 GP**

---

610250 -- LAMPHOLDER ASSY W/ YOKE W/ LAMP (610211) QD LEAD  
650144 -- LAMPHOLDER ASSY W/ YOKE W/ LAMP (610211) NO LEAD  
610265 -- LAMPHOLDER ASSY W/ YOKE W/ LAMP (610218) QD LEAD  
610263 -- LAMPHOLDER ASSY W/ YOKE W/ LAMP (610218) NO LEAD  
100632 -- LAMPHOLDER ASSY W/ YOKE W/ LAMP (610221) QD LEAD  
100633 -- LAMPHOLDER ASSY W/ YOKE W/ LAMP (610221) NO LEAD

# LIGHT BAR PAL 4000 GP

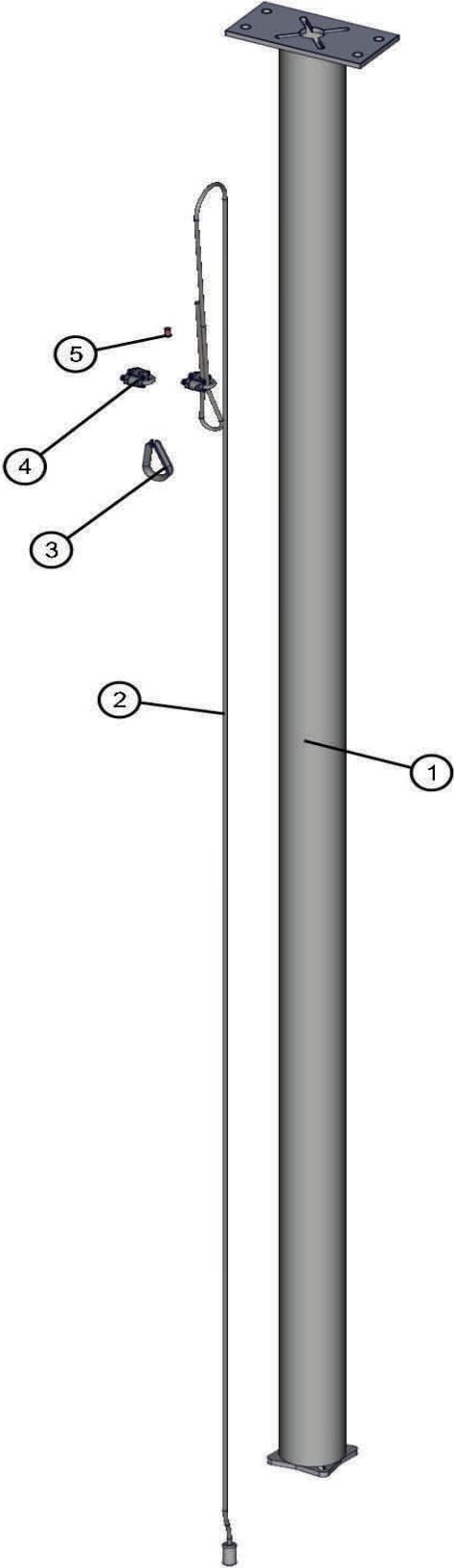


NO	QTY	PARTNO	DESCRIPTION
1	1	650319P	FRAME
2	4	044031	5/16 -18 KEPS NUT
3	1	711029	7/8" LOCKING HOLE PLUG
4	1	310033	1/2 CORD GRIP
5	1	022415	BUSHING THREADED
6	4	022020	3/8 2 SCREW CLAMP (HARDWIRED OPTION)
7	1	620537P	COVER
8	10	053006	1/4-20 X 3/4 RHSSN BOLT
9	10	044021	1/4-20 KEPS NUT
10	4	101813	.781"ID x 2"OD x 1/2" HDPE WASHER
11	4	047035	3/4 FLAT WASHER PLTD
12	4	044058	3/4-10 NYLOCK PLATED HEX NUT
13	1	090002	HIGH VOLTAGE DECAL
14	4	310414	QD CONNECTOR FEMALE (OPTION)
15	4	310413	CAP (OPTION)
16	4	045116	1/8 POP RIVET

NOTE: NS = NOT SHOWN. WHEN ORDERING, SPECIFY THE COLOR WANTED ON PARTS CONTAINING THE LETTER "P"

# 2 5/8 ROUND TOWER SECTION

## PAL 4000 GP



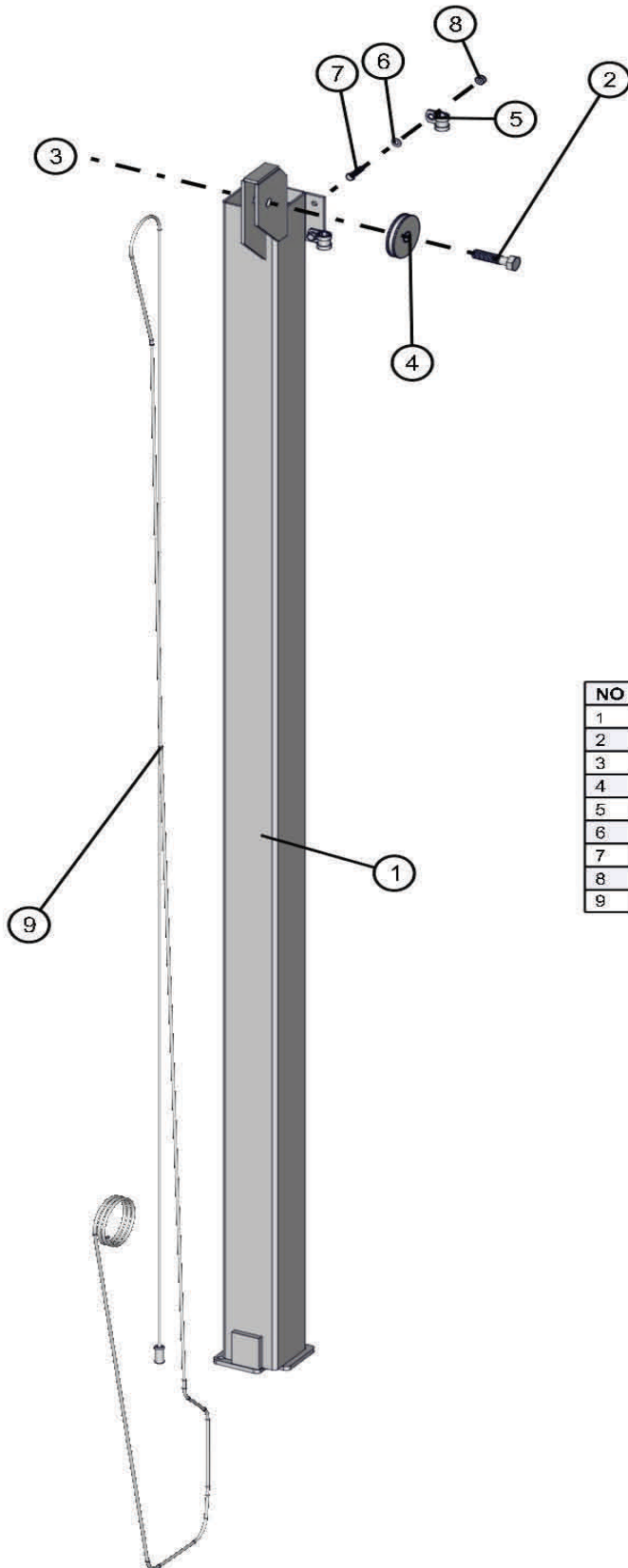
NO	QTY	PARTNO	DESCRIPTION
1	1	530552P	2 5/8 TOWER
2	1	320185	3/16 X 10' STEEL CABLE
3	1	045040	1/4 CABLE THIMBLE
4	2	620084	1/4 CABLE CLIP
5	1	022150	FERRULE 10-12 AWG

NOTE: NS = NOT SHOWN. WHEN ORDERING, SPECIFY THE COLOR WANTED ON PARTS CONTAINING THE LETTER "P"



# 3 INCH TOWER SECTION

## PAL 4000 GP

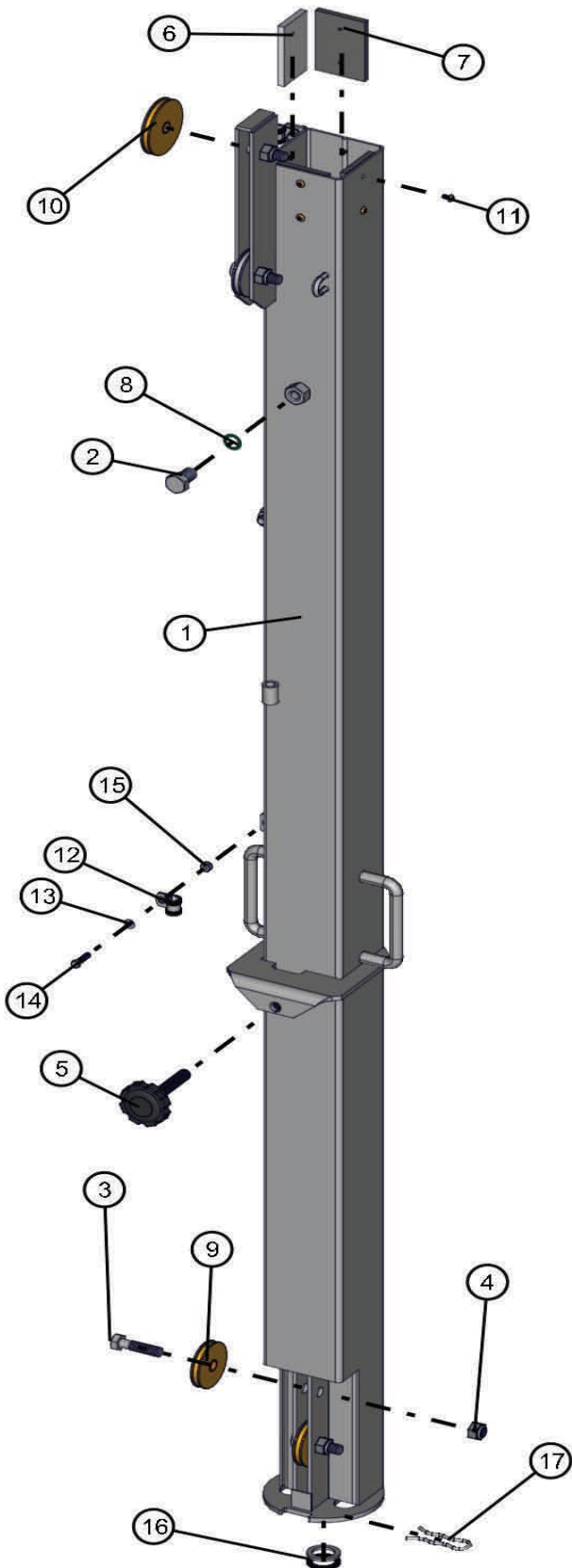


NO	QTY	PARTNO	DESCRIPTION
1	1	530551P	3" TOWER
2	1	046200	1/2-13 X 2 1/4 HHCS GR5 (PLATED)
3	1	044048	NUT NYLOCK 1/2-13 HEX PL
4	1	320112	2-1/2 PULLEY
5	2	310212	CLAMP CUSH #10 1/4 HOLE
6	2	047009	1/4 SAE SS FW
7	2	046015	1/4-20 X 1 HEX BOLT
8	2	044023	1/4-20 NYLOCK NUT
9	1	650133	3/16 STEEL CABLE

NOTE: NS = NOT SHOWN. WHEN ORDERING, SPECIFY THE COLOR WANTED ON PARTS CONTAINING THE LETTER "P"



# 4 INCH TOWER SECTION PAL 4000 GP

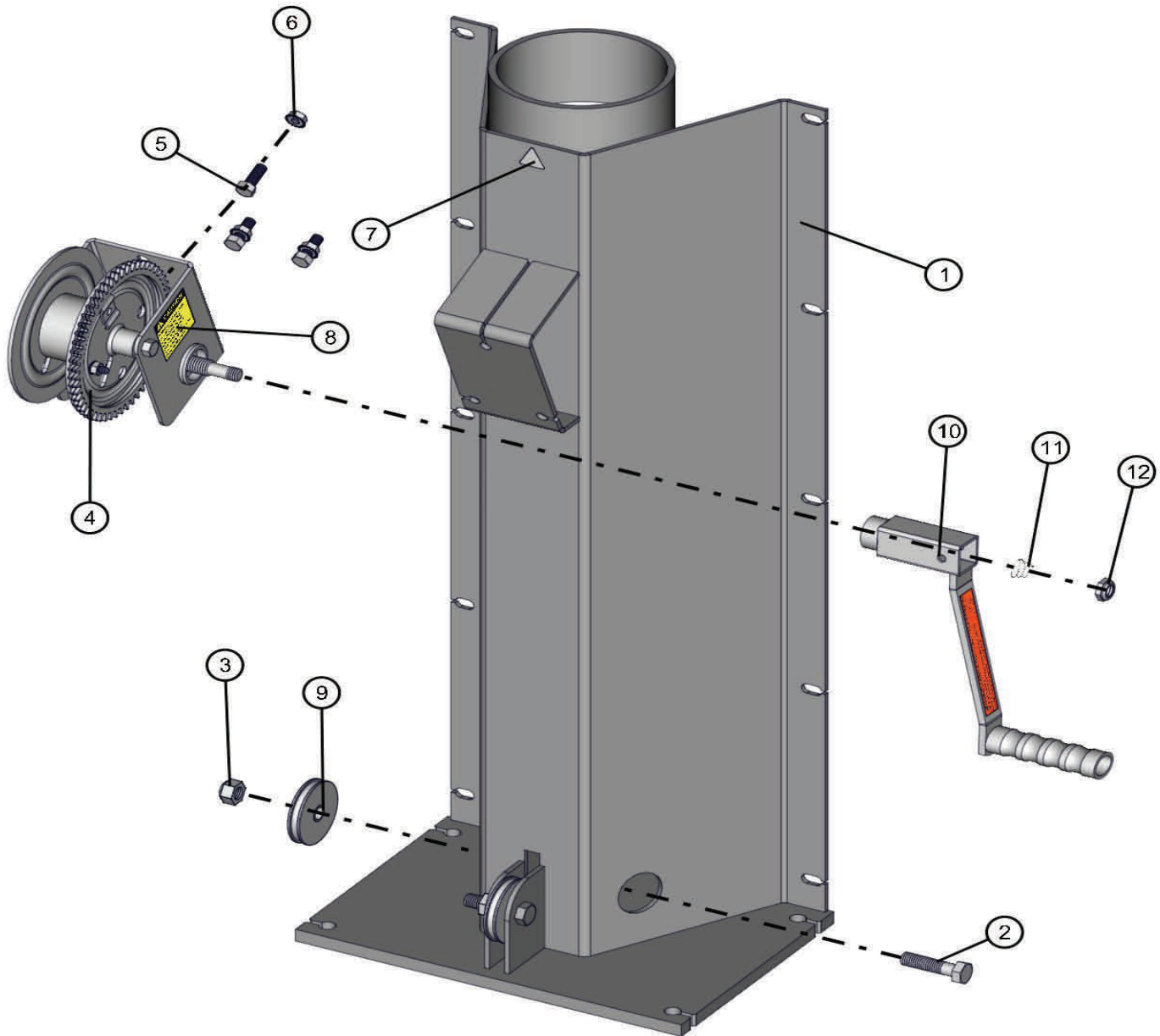


NO	QTY	PARTNO	DESCRIPTION
1	1	530550P	4 TOWER
2	1	046242	5/8-11 X 1 GR 5 HEX BOLT
3	4	046200	1/2-13 X 2 1/4 HHCS GR5 (PLATED)
4	4	044048	NUT NYLOCK 1/2-13 HEX PL
5	1	620550	1/2-13 X 2 1/8" LOCKING KNOB
6	1	352280	2" TOWER PAD
7	3	650110	2 1/2 TOWER PAD
8	1	043100	5/8 INT LOCK WASHER
9	3	320112	2-1/2 PULLEY
10	1	320110	PULLEY 3 OD W/BUSHING
11	8	041023	#10 X 3/8 PLS
12	4	310212	CLAMP CUSH #10 1/4 HOLE
13	4	047009	1/4 SAE SS FW
14	4	046015	1/4-20 X 1 HEX BOLT
15	4	044023	1/4-20 NYLOCK NUT
16	2	047055	BUSHING, 1" NARROW RIM
17	1	620545	3/4" HAIR PIN CLIP PLATED

NOTE: NS = NOT SHOWN. WHEN ORDERING, SPECIFY THE COLOR WANTED ON PARTS CONTAINING THE LETTER "P"

# TOWER SUPPORT BASE

## PAL 4000 GP

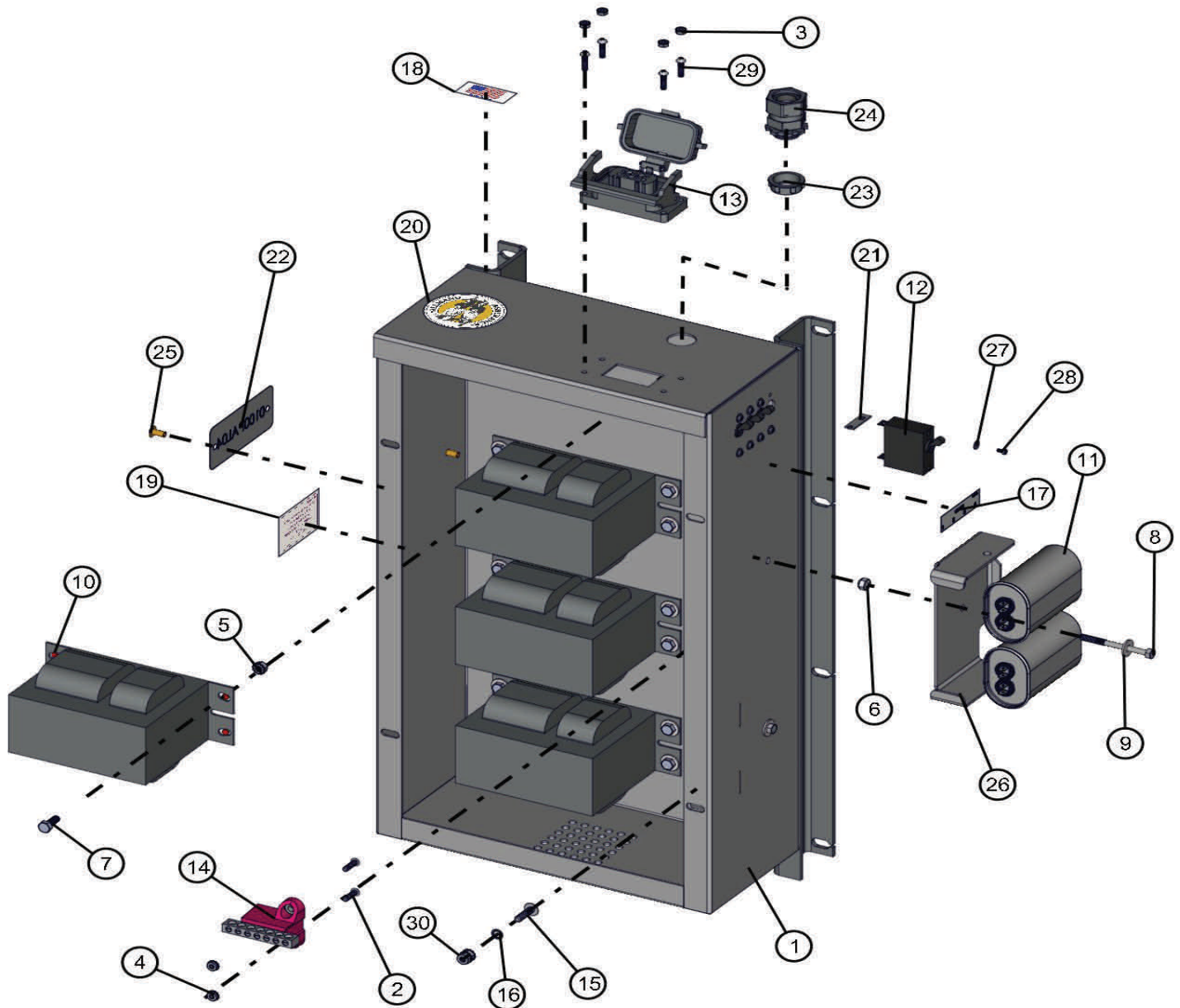


NO	QTY	PARTNO	DESCRIPTION
1	1	530553P	TOWER SUPPORT
2	2	046200	1/2-13 X 2 1/4 HHCS GR5 (PLATED)
3	2	044048	NUT NYLOCK 1/2-13 HEX PL
4	1	610531	DL-1200 lb WINCH
5	3	046110	3/8-16 X 1 HHCS GR5 PL
6	3	044036	3/8-16 KEPS NUT
7	1	090177	ALIGNMENT DECAL
8	1	090474	WINCH CAUTION DECAL
9	2	320112	2-1/2 PULLEY
10	1	530575	WINCH HANDLE
11	1		WINCH SPRING (SUPPLIED WITH WINCH)
12	1		1/2" NUT (SUPPLIED WITH WINCH)

NOTE: NS = NOT SHOWN. WHEN ORDERING, SPECIFY THE COLOR WANTED ON PARTS CONTAINING THE LETTER "P"

# BALLAST BOX

## PAL 4000 GP

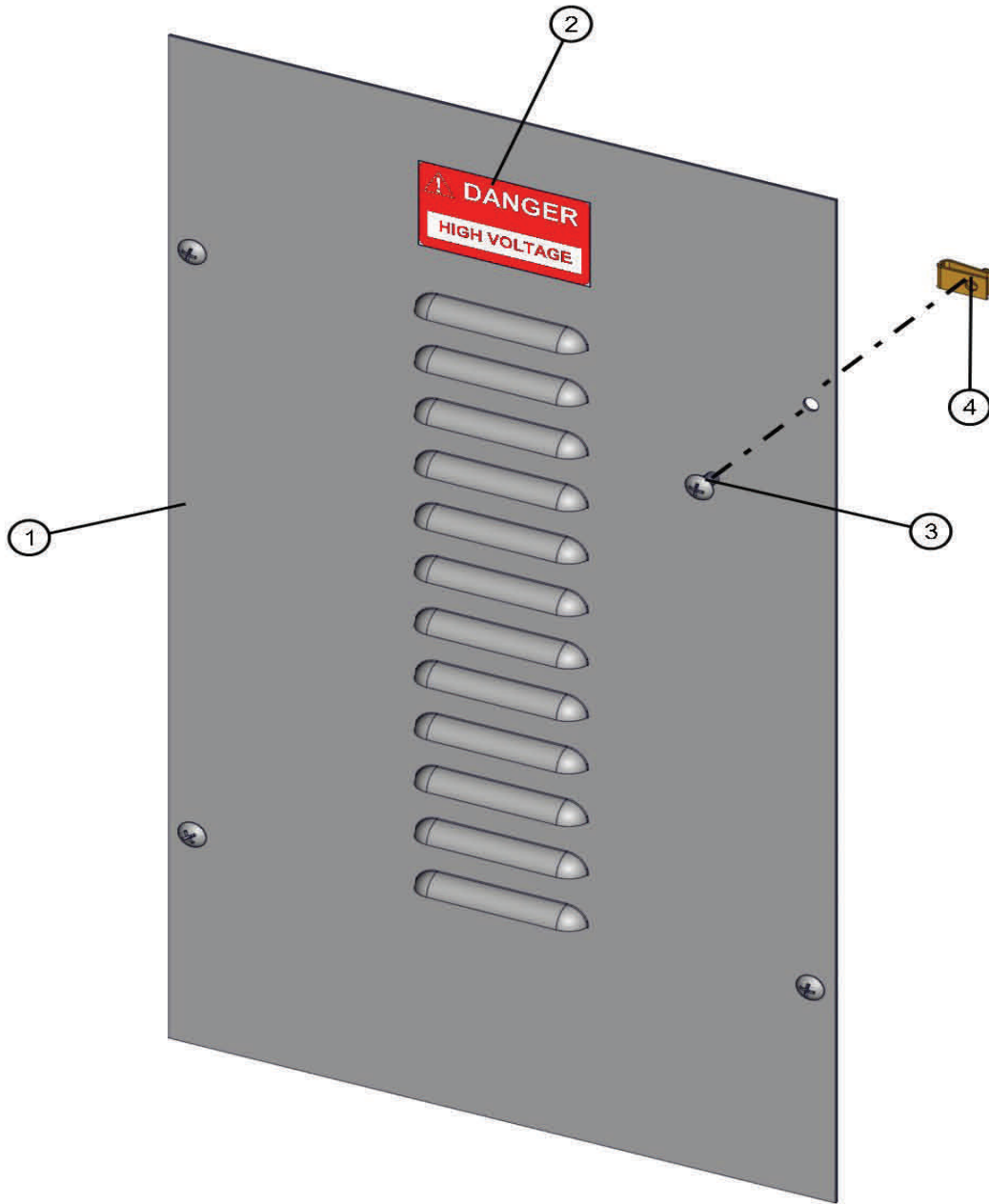


NO	QTY	PARTNO	DESCRIPTION
1	1	530574P	BALLAST BOX
2	2	041027	10-24 x 3/4 CR-RHMS
3	4	044003	#8-32 NC KEPS NUT
4	2	044016	10-24 KEPS NUT
5	16	044021	1/4-20 KEPS NUT
6	2	044023	1/4-20 NYLOCK NUT
7	16	046006	1/4-20 X 3/4 HHCS GR5
8	2	046037	1/4-20 x 2 3/4 HEX BOLT
9	20	047009	1/4 FLAT WASHER
10	4	310124	BALLAST ONLY 1000W 60HZ 110-480V (MH)
11	4	310115	CPAPACITOR 24uF
12	4	330458	15 AMP SWITCH SPST
13	1	530582	SAFETY LATCH
14	1	530581	TERM BLOCK
15	1	041080	1/4 - 20 X 1 THCS
16	1	043050	1/4 INTERNAL TOOTH

NO	QTY	PARTNO	DESCRIPTION
17	1	060169	LIGHT LABELING DECAL
18	1	090385	MADE IN USA DECAL
19	1	090465	PARTS & SERVICE
20	1	102088	3 GENERATIONS DECAL
21	2	620560	BUSS BAR
22	1	530346	SERIAL NUMBER PLT
23	1	022175	3/4 PLASTIC BUSHING
24	1	310122	3/4 CORD GRIP
25	2	045118	1/4 RIVET
26	2	680608P	CAPACITOR CLAMP
27	8	047047	#8 FW
28	8	041018	6-32 X 1/4 PHHMS
29	4	041042	SCREW MS #8-32 X 3/4 PL
30	2	044021	1/4-20 KEPS NUT

NOTE: NS = NOT SHOWN. WHEN ORDERING, SPECIFY THE COLOR WANTED ON PARTS CONTAINING THE LETTER "P"

# BALLAST BOX COVER PAL 4000 GP

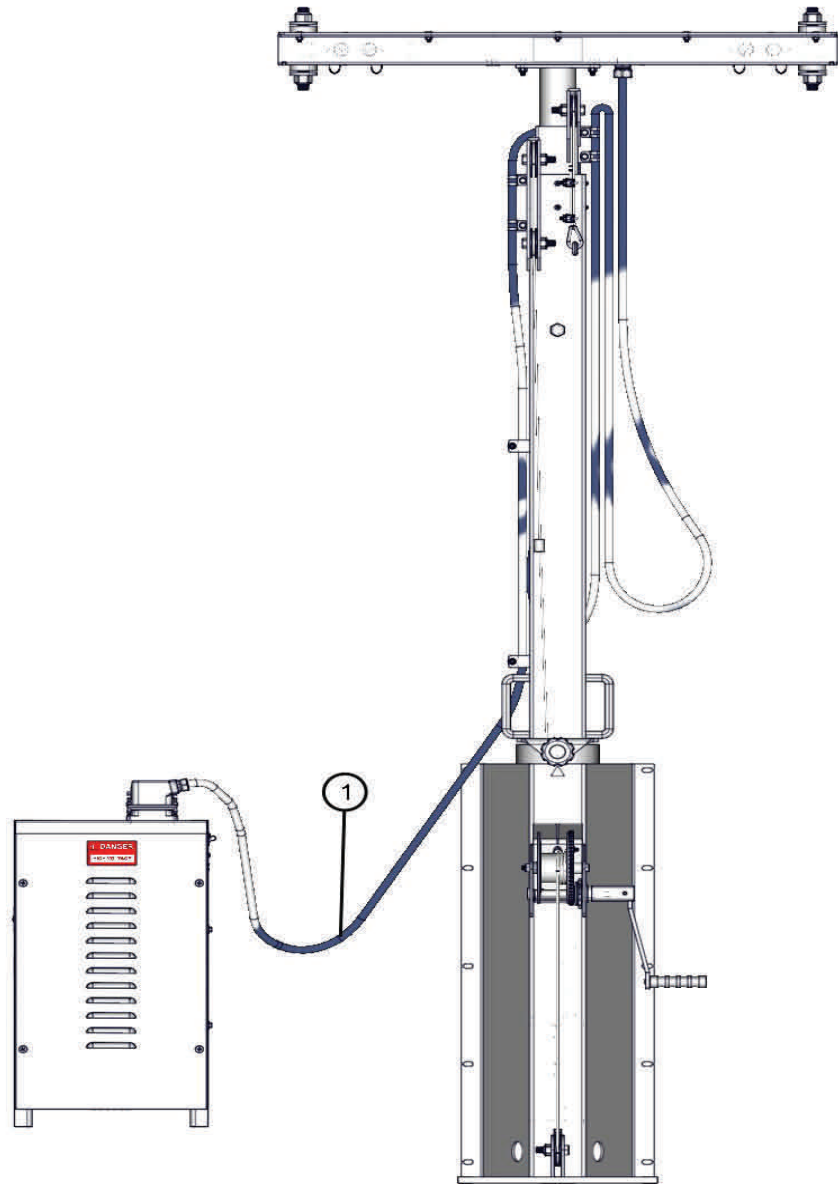


NO	QTY	PARTNO	DESCRIPTION
1	1	530433P	COVER
2	1	090002	HIGH VOLTAGE DECAL
3	4	041078	1/4-20 X 1/2 CR-THMS PL
4	4	044106	1/4 TINNERMAN NUT

NOTE: NS = NOT SHOWN. WHEN ORDERING, SPECIFY THE COLOR WANTED ON PARTS CONTAINING THE LETTER "P"

# PAL 4000 GP

---



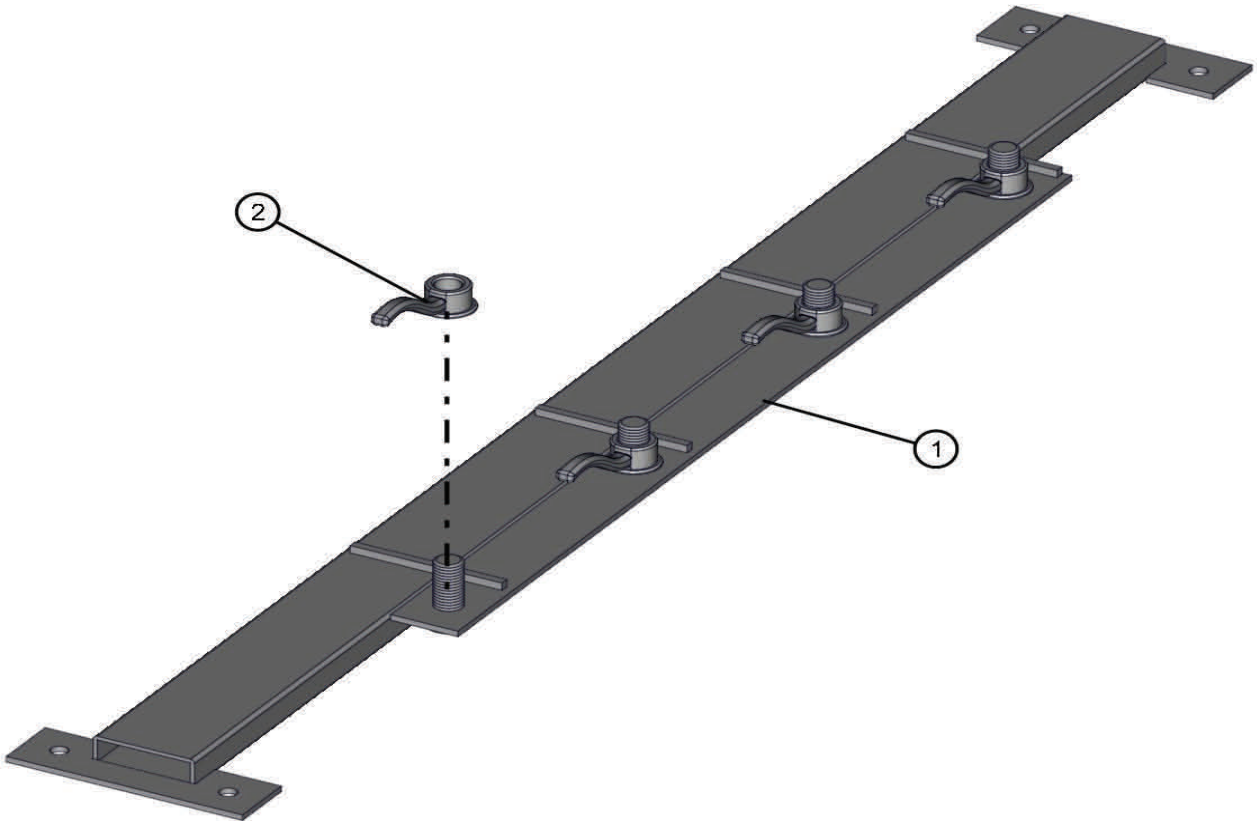
NO	QTY	PARTNO	DESCRIPTION
1	1	530571	14/7 MAST CORD

---

NOTE: NS = NOT SHOWN. WHEN ORDERING, SPECIFY THE COLOR WANTED ON PARTS CONTAINING THE LETTER "P"

# INSIDE LIGHT STORAGE BAR

## PAL 4000 GP



NO	QTY	PARTNO	DESCRIPTION
1	1	530562P	STORAGE BAR
2	4	630728	SHO HANDLE NUT

NOTE: NS = NOT SHOWN. WHEN ORDERING, SPECIFY THE COLOR WANTED ON PARTS CONTAINING THE LETTER "P"



